

*Professional Quality*  
*Photo Lab & Press Printing Services*



McGreevy

**PROLAB**

**& ProPress**

376 Broadway, Albany, NY, 12207  
*In the heart of downtown Albany*



*Price List*

McGreevy

**PROLAB**  
**& ProPress****Professional Quality Photo Lab & Press Printing Services****518-426-1039**

## Table of Contents

Ordering Online	3
Film Processing	4
Contact Sheets & Index Prints	5
Photofinishing	6
Full Roll Film Scans	7
Individual Film Scans	8
Premium Film Scans	9
Family Archive Scans	10-11
Flatbed Scans	12
Restorations & Retouching	13
Frontier Prints (photo paper up to 10x15)	14-15
Large Format Photo Prints (up to 44" wide)	16-17
Mounting & Laminating	18
Digital Capture	20
Giclée Printing (fine art paper & canvas)	21-25
Proof Albums	26
USB Presentation Case	27

Custom Albums	28-29
Promo Prints	30
Holiday Greeting Cards	31
General Press Printing	32
Post Cards	33
Folded Cards	34
Business Cards	35
Books	36-37
Calendars	38
Posters	39
Brochures	40
Flyers	41
Sell Sheets	42
Rack Cards	43
Table Tents	44
Hang Tags	45
Bookmarks	46
eCommerce & Web Hosting	47

McGreevy

**PROLAB**  
**& ProPress****Professional Quality Photo Lab & Press Printing Services****518-426-1039**

## Ordering Online

visit [www.mcgreevyprolab.com](http://www.mcgreevyprolab.com) to get started

We want to make it convenient for you to do business with us.

From simple email attachments to full featured web based ordering solutions, with our powerful array of online technology you are sure to find one or even a couple methods that are tailored to your needs. .

### Email Attachments

Good for a few small files. For many, a trusty email attachment is the most familiar and convenient way to move an image across the internet. We recommend that you limit your attachment to just a few files per email. Most email providers will not accept attachments over 10MB. *Send files using this email address:*  
[info@mcgreevyprolab.com](mailto:info@mcgreevyprolab.com)

### Digital Drop Box

Move large amounts of information across the web with ease. Send us your files directly from the "Digital Drop Box" page located on our web site. The Digital Drop Box provides a convenient method for quickly uploading files and .zip folders directly to the McGreevy ProLab & ProPress. Once the files arrive we can take your order by phone. It's fast and easy.

### OnlinePhotoCenter

A "must try" for everyone. Get your online photofinishing from a lab you know and trust. Full featured, consumer friendly, online ordering with all the bells and whistles for the photo enthusiast. Order prints, design cards, books, calendars and more, all from the comfort of your home. Pick-up in-store or have your prints mail directly to your home or business.

McGreevy

**PROLAB**  
**& ProPress**

Professional Quality Photo Lab &amp; Press Printing Services

518-426-1039

## Film Processing

We process C-41 and B&W film using Tru Trak hanger transport machines. These dip and dunk systems ensure clean and consistent results, with time, temperature, agitation and replenishment all accurately controlled. With our commitment to the highest standards of quality, control strips are utilized to determine accurate color balance, correct film speed, clean whites (D-min), and rich blacks (D-max). The result is accurate, consistent film processing time and time again.

***We process film once per week on Wednesday. Film must be dropped off by 1:00 PM.***

Film Format	C-41	B&W
35mm	11.00	11.00
120	11.00	11.00
4x5	5.50	5.50
8x10	12.00	12.00

### • 50% Discount

on roll film processing when ordered with Photofinishing or Full Roll Film Scans.

- Push/Pull \$3.00 per roll or sheet
- Clip Tests - \$8.00
- Cross Process: add \$3.00 per roll (E6 film in C-41 chemistry)
- Archival sleeves and pages

Once the film is processed there are a variety of options to choose from:

**Contact Sheets**  
**Index Prints**  
**Photofinishing**  
**Scanning**  
**Digital Downloads**

Find a complete description of these services throughout the price list.

---

### TURN-AROUND

- *We process film once per week on Wednesday. Film must be dropped off by 1:00 pm to be included on the Wednesday film run.*
  - *"Process only" film will be ready on Thursday morning.*
  - *Prints and scans from rolls are typically ready by Monday morning. See "Photofinishing" and "Full Roll Film Scans" for pricing and exact turn-around.*
-

McGreevy

**PROLAB**  
**& ProPress**

Professional Quality Photo Lab &amp; Press Printing Services

518-426-1039

## Contact Sheets (From Film)

Contact sheets are a very efficient way to view roll or sheet film. This traditional viewing method shows all the images neatly on one page and provides a good record of exposure accuracy. We no longer make our contacts using an enlarger, but instead create them digitally. We start by first sleeving the film in a clear archival page; the page of film is then flatbed scanned, color corrected and printed on 8x10 paper.

	<b>B&amp;W</b> 8x10	<b>C-41</b> 8x10
At time of film processing	16.00	16.00
<u>Not</u> at time of film processing	20.00	20.00

**Turn-around: 2 Days**

24hr. Rush + 50%  
6hr. Rush + 100%

- Glossy paper only.
- Price does not include film processing.

**Available from:** 35mm through 8x10 film formats.

## Index Prints (From Digital Files)

Index prints are similar to contact sheets in that they conveniently show all the images on one page. The big difference is that they are compiled from digital files and show the file name under each image. You can choose either 6, 12, 24, or 36 images per page.

**Standard index prints hold 36 images, but you can also choose pages that hold 6, 12, or 24 larger images.**

8x10	10.00
10x15	17.00

**Turn-around: 2 Days**

24hr. Rush + 50%  
6hr. Rush + 100%

**Available From:** Digital camera files or scanned images.

**Film must first be scanned to make index prints;  
scanning is not included in the cost of the index print.**

McGreevy

**PROLAB****& ProPress**

Professional Quality Photo Lab &amp; Press Printing Services

518-426-1039

**Photofinishing** (full uncut rolls)

The Frontier Digital Lab has really added a new dimension to Photofinishing, but a fancy digital printer alone does not automatically make good prints, it takes skilled technicians, a good eye for color, and a commitment to provide a top quality product. Here at McGreevy ProLab & ProPress our Photofinishing service is designed to meet the needs and expectations of the professional photographer. We never operate our printers in automatic mode. Instead every frame is evaluated for proper color balance and density.

**From uncut full rolls - at time of processing**

	<b>35mm Negative</b> Color or B&W		<b>120 Negative</b> Color or B&W
	<b>4x6</b>	<b>5x7</b>	<b>4x5 / 4x6 / 5x5 *</b>
1 <sup>st</sup>	.44 ea.	.94 ea.	1.16 ea.
Addl.	.32 ea.	.66 ea.	.85 ea.

**\* Medium Format  
Proof Printing Sizes**

6x4.5 film = 4x5 print  
 6x7 film = 4x5 print  
 6x6 film = 5x5 print  
 6x9 film = 4x6 print

Print prices from above calculated as full rolls with 50% film processing discount

<b>Film Processing &amp; 4X6 Prints Combined</b>		
	<b>35mm Negative</b> Color or B&W	<b>120 Negative*</b> Color or B&W
24exp (35mm)	16.06	-
36 exp (35mm)	21.34	-
8 exp (6x9)	-	14.78
10 exp (6x7)	-	17.10
12 exp (6x6)	-	19.42
15 exp (4.5x6)	-	22.90
<b>Add Full Roll Film Scans for just \$8.00 (CD or FTP Upload)</b>		

**Turn-Around:**

Begins once film processing  
is complete.

All Film Types:

2 Days (Monday 9am)

24hr. Rush + 50% (Friday 9am)

6hr. Rush +100% (Thursday 3pm)

**Options & Extras**

- Glossy or matte
- Borderless or White Borders (no extra charge)
- Add Full Roll Film Scan for \$8.00
- Add 100% for "entire roll reprints" from cut film.

McGreevy

**PROLAB**

Professional Quality Photo Lab &amp; Press Printing Services

**& ProPress**

518-426-1039

**Full Roll Film Scans** (uncut only)

This service offers an inexpensive way to get great scans at time of film processing. We use the Fuji Frontier SP2000 film scanner and correct each negative individually before it is scanned. Scans are saved as high quality JPEG's and delivered as a digital download via email link.

**From uncut full rolls - at time of processing**

<b>Resolution</b>	<b>35mm Negative</b> Color or B&W	<b>120 Negative</b> Color or B&W
Low (4x6) - 6Mb	.44 ea.	1.16 ea.
Medium (5x7) - 9Mb	.62 ea.	1.52 ea.
Med.-High (8x12) - 24Mb	1.00 ea.	2.00 ea.
High (10x15) - 38Mb	1.50 ea.	2.50 ea.

**Price includes:  
Digital Download**

Scan prices from above calculated as full rolls with 50% film processing discount

<b>Film Processing &amp; Scans Combined - (Low Res)</b>		
	<b>35mm Negative</b> Color or B&W	<b>120 Negative*</b> Color or B&W
24exp (35mm)	16.06	-
36 exp (35mm)	21.34	-
8 exp (6x9)	-	14.78
10 exp (6x7)	-	17.10
12 exp (6x6)	-	19.42
15 exp (4.5x6)	-	22.90
<b>Add 4x6 prints for just \$8.00</b>		

**Turn-around:**

Low Res Scans - same turn-around as Photofinishing (no time added).

All other Resolutions - Add 24hr.

**Options & Extras:**

- Add 4x6 prints for \$8.00
- Includes Digital Download or USB Transfer (Customer provides USB drive)
- Add 100% for "entire roll scans" from cut film.



McGreevy

**PROLAB**  
**& ProPress**

Professional Quality Photo Lab &amp; Press Printing Services

518-426-1039

## Individual Film Scans

The Fuji SP2000 film scanner is nothing short of amazing. Don't let the inexpensive prices fool you, these scans are absolutely top quality. The only way to get better film scans is with our Premium Film Scans service. The key to top quality scanning is in the "preview" step before the actual scan is made; here we adjust color, density and contrast to achieve optimal results. When ordering, remember you can always downsize a scan that is too large, but if a scan is too small the image quality will be compromised.

**Available From:**

- 35mm film
- Medium format film (6x4.5, 6x6, 6x7, 6x9)
- Color or B&W
- Negatives or Slides / Transparencies
- For flat art or oversize film scans see "Flatbed Scans".

**Options & Extras:**

- Digital Download - \$8.00
- USB Transfer (customer provides USB drive) - \$8.00
- Rename files - \$1.00 per image
- Cropping or Sizing - \$2.75 per image

From cut film (mix and match) - Not at time of processing Price does <u>not</u> include Digital Download				
Resolution	35mm Negative		Slide / Medium Format	
	Scan & Clean	No Cleaning	Scan & Clean	No Cleaning
Low (4x6)	5.25	3.00	6.60	4.25
Medium (5x7)	8.00	3.85	9.35	5.25
Med.-High (8x12)	10.50	5.50	11.85	6.60
High (10x15)	17.00	9.35	18.50	10.75

**Turn-around: 2 Days**

24hr. Rush +50%  
 6hr. Rush +100%  
 2hr. Rush +150%

**Volume Discounts:**

25+ -10%  
 50+ -15%  
 100+ -20%

- If ordering prints 5x7 or larger from a scan, you must get the "Scan & Clean" service.
- For uncut full rolls - see "Full Roll Film Scans"
- For cut (strips) full rolls - "Family Archive Scans"

**Cleaning** - The scanning process captures everything down to the smallest detail. Although we blow off the original film with compressed air before scanning, tiny dust specks still remain that become apparent when you view the image on a monitor or make a print. During the cleaning process we magnify the final scan at actual pixel size and methodically clone out these imperfections to ensure an absolutely clean image no matter what size you are enlarging it to. This cleaning procedure does not include retouching damaged or extremely dirty originals.

**Actual Scan Sizes From Each Film Format**

Film Format	LOW		MEDIUM		MEDIUM-HIGH		HIGH	
	File size Mb	Print size @ 300 ppi	File size Mb	Print size @ 300 ppi	File size Mb	Print size @ 300 ppi	File size Mb	Print size @ 300 ppi
<b>35mm, 6x4.5, 6x9</b>	6.2 Mb	4x6	9.6 Mb	5x7.5	24.7 Mb	8x12	38.6 Mb	10x15
<b>6x6</b>	6.4 Mb	5x5	9.7 Mb	6x6	16.5 Mb	8x8	25.7 Mb	10x10
<b>6x7</b>	5.1 Mb	4x5	10.8 Mb	6x7	20.6 Mb	8x10	30.9 Mb	10x12



McGreevy

**PROLAB**  
**& ProPress**

Professional Quality Photo Lab &amp; Press Printing Services

518-426-1039

## Premium Film Scans

This is the pinnacle of high performance scanning. If you are making enlargements over 16x20, our high resolution Premium Film Scans are a must. Premium Scans are also essential for those who need the very best quality scans for Fine Art Prints and for archiving valuable museum and historical negative collections.

**State of the art equipment:** For our Premium Film Scans we use the Creo iQsmart3 scanner. This top-of-the-line professional scanner has an optical resolution of up to 5,500 ppi and uses Exclusive XY Stitch technology which ensures pinpoint sharpness from edge to edge. Creo's patented OXYGEN software is without question the best scanning software we have ever used. It provides excellent control during pre-scan analyses and offers astounding results with all three film types.

Our Premium Film Scans undergo a **three step quality control process** to obtain optimal results.

**(Step 1) Pre-scan Analyses** - Before the scan is made, the pre-scanned image is analyzed for its full density range. Upper and lower limits are established; white point, black point, and spectral highlights are all accurately pinpointed. Color balance is adjusted and an identifiable mid-tone is set. The goal in the pre-scan analysis is to allow the scanner to extract as much information as possible from the original.

**(Step 2) Post production** - After the scan is complete, we continue with additional color and density refinements. We modify the histogram, make curve adjustments, and correct hue/saturation. The entire image is fine tuned to look its best and closely match existing originals.

**(Step 3) Cleaning** - High resolution scans capture everything down to the smallest detail. This includes even the tiniest dust specks. We magnify the final image at actual pixel size and methodically clone out these imperfections to ensure an absolutely clean image no matter what size you are enlarging it to. This cleaning procedure does not include retouching damaged or extremely dirty originals.

### 35mm Special !!!

35mm film scanned full frame.  
5000 ppi / 100 Mb, density & color balanced,  
cleaned at actual pixel size.

**Only \$50.00**

#### Available From:

- 35mm through 8x10 film
- Color or B&W
- Negatives or Slides / Transparencies

Scan Size	Scan & Clean	No Cleaning
50 Mb	50.00	42.50
75 Mb	60.00	51.00
100 Mb	70.00	59.50
150 Mb	80.00	68.00
200 Mb	90.00	76.50
250 Mb	100.00	85.00
300 Mb	110.00	93.50
350 Mb	120.00	102.00
Over 350 Mb	.35 per Mb	-15%

#### Options & Extras:

- RGB, CMYK or Grayscale
- Grayscale scans are charged as the full size RGB before they are converted to grayscale.
- 8x10 Originals - add \$17.50
- Includes Digital Download  
or USB Transfer (Customer provides USB drive)

#### Volume Discounts:

10+ - 10%  
25+ - 15%

#### Turn-around: 48 hrs.

24hr. Rush + 50%  
6hr. Rush +100%  
2hr. Rush +150%

McGreevy

**PROLAB**  
**& ProPress**

Professional Quality Photo Lab &amp; Press Printing Services

518-426-1039

## Family Archive Scans (page 1 of 2)

*Save those family photos before they fade away!*

Do you have shoe boxes and drawers stuffed full with memories; literally hundreds, if not thousands of old photo prints, slides and negatives just collecting dust? Wouldn't you love to get them organized, share them with family & friends and preserve these treasures for generations to come?

**...Well, we're going to make that job easy—so let's get to it!**

For starters, gather up all those old photos and bring or mail them in. With our high speed scanners we will digitize your entire collection and save it to a USB thumb drive. You can make additional copies for family & relatives, order 4x6 prints or an index booklet. If you discover a particularly cherished image that needs restoration—we can do that too!

	Family Archive Scan Packages			
	Prints	Negatives	Slides	Turn-around
25 Photos	\$45	\$58	\$58	3 days
50 photos	\$72	\$92	\$92	
100 photos	\$114	\$147	\$147	7 Days
250 photos	\$230	\$295	\$295	
500 photos	\$365	\$470	\$470	14 days
750 photos	\$450	\$555	\$555	
1000 Photos	\$470	\$600	\$600	

### Includes:

- Scanning
- Image rotation
- Auto Color adjustment
- Transfer to USB Drive

- Prints, slides and negatives can not be combined for quantity pricing. Each is a separate service.
- Quantities over the set packages will be pro-rated at the quantity unit price.

### Options & Extras:

- **Additional USB Thumb Drives:** \$18.00 ea.

4x6 Prints (Matte or glossy)			
25+	50+	100+	250+
.63 ea.	.57 ea.	.51 ea.	.46 ea.

Index Booklet - 8.5x11							
Saddle stitch press printed booklet containing thumbnail images of your entire collection (20 images per page, includes file names below each image)							
Up to 160 Images	Up to 240 Images	Up to 560 Images	Up to 880 Images	Up to 1200 Images	Up to 1600 Images	Up to 2000 Images	Over 2000 Images
\$21.50	\$29.00	\$44.50	\$56.00	\$66.50	\$80.00	\$93.50	Add extra booklet

McGreevy

**PROLAB****& ProPress**

Professional Quality Photo Lab &amp; Press Printing Services

518-426-1039

**Family Archive Scans** (page 2 of 2)

Prints	Slides
<p><b>Size Guidelines:</b> Prints 2½x3½ up to 8.5x11</p> <p><b>How to Organize:</b> All prints must be loose, removed from albums and unmounted. Please sort and stack with the largest on the bottom to smallest on the top.</p> <p>The following will not feed through the high-speed scanner – tape, glue, staples, fragile, torn or bent prints, very warped prints, and old Polaroid's.</p> <p><b>Want scans in a specific order?</b> - add \$ .15 ea Number the back of each print with a pencil and stack in order.</p> <p><b>Flatbed Scan Option:</b> Originals too small, too large or too fragile for the high speed print scanner can be flatbed scanned for <b>\$4.00 ea.</b> (11x17 is the maximum flatbed scan size)</p> <p><b>Note:</b> This service is not limited to just photo prints. Customers have brought in newspaper clippings, marriage certificates, diplomas, children's drawings, property deeds, and every other kind of keepsake to be digitized along with the rest of their collection.</p> <p><b>Scan Resolution:</b> 300 dpi at original print size</p>	<p><b>Size Guidelines:</b> 35mm color or b&amp;w</p> <p><b>How to Organize:</b> Arrange slides in the correct viewing direction and put in stacks of approximately 50 each. Secure the stacks with rubber bands. Slides carousels will also work fine.</p> <p><b>Want scans in a specific order?</b> - add \$ .15 ea. Number each slide on the front and stack in order.</p> <p><b>Scan Resolution:</b> 4x6 at 300 dpi</p>
	Negatives
	<p><b>Size Guidelines:</b> 35mm color or b&amp;w Full strips only (3 frame minimum). All negs on each strip will be scanned</p> <p><b>How to organize:</b> Separate color from b&amp;w negatives and stack in piles. Try to handle by the film edge. Put in envelopes or ziploc bags.</p> <p><b>Want scans in a specific order?</b> - add \$ .15 ea Use a marker to number each strip in the clear sprocket area (don't mark on the image) and stack in order.</p> <p><b>Scan Resolution:</b> 4x6 at 300 dpi</p>
<p><b>Need to keep the photos separated in groups?</b> That's a reasonable request. After all, photos may need to go back into certain albums or perhaps some are borrowed from family or relatives. Use boxes, envelopes or ziploc bags to organize your originals and we will keep them separate.</p>	
<p><b>Odd size originals that don't conform with the specifications of this service?</b> We are a full service professional lab and we can scan almost anything. Whether it be our custom film scans, flatbed scans, or digital capture services, we will have options to get the job done.</p>	
<p><b>Photo Restoration:</b> Now that you are sorting through all your old photos, you're bound to come across some one-of-a-kind treasures that need a little TLC. We can restore those damaged, torn and faded pictures. Please see the "Restorations" section of our price list for more information.</p>	
<p><b>About Scan Resolution:</b> Our Family Archive Scans will look great on your computer and just as good on a 60 inch flat screen TV. They will easily enlarge to 5x7 or 8x10 prints. If there are certain photos that you want to print larger, then we suggest that just those originals be scanned at a higher resolution with our custom scanning service.</p>	

**Need to keep the photos separated in groups?** That's a reasonable request. After all, photos may need to go back into certain albums or perhaps some are borrowed from family or relatives. Use boxes, envelopes or ziploc bags to organize your originals and we will keep them separate.

**Odd size originals that don't conform with the specifications of this service?** We are a full service professional lab and we can scan almost anything. Whether it be our custom film scans, flatbed scans, or digital capture services, we will have options to get the job done.

**Photo Restoration:** Now that you are sorting through all your old photos, you're bound to come across some one-of-a-kind treasures that need a little TLC. We can restore those damaged, torn and faded pictures. Please see the "Restorations" section of our price list for more information.

**About Scan Resolution:** Our Family Archive Scans will look great on your computer and just as good on a 60 inch flat screen TV. They will easily enlarge to 5x7 or 8x10 prints. If there are certain photos that you want to print larger, then we suggest that just those originals be scanned at a higher resolution with our custom scanning service.

McGreevy

**PROLAB**  
**& ProPress**

Professional Quality Photo Lab &amp; Press Printing Services

518-426-1039

## Flat Bed Scans

We offer high quality flatbed scans from your old family photographs, news paper articles and original artwork. Basically anything that is flat and can fit on the 12" x 18" bed can be scanned. These scans will capture fine detail and deliver rich smooth tonal values. Our color correction goal is for pleasing color, not necessarily matching specific colors of the original. Basic clean-up is included on all scans.

The most common application of this service is scan-to-print, thus our standard scan resolution is 300 ppi. which accommodates our photographic printers; but depending your final use you may require a different resolution.

### Available From:

- Flat artwork up to 12x18
- Film up to 12x18 (add 50%)
  - transparencies
  - b&w and color negatives
  - x-rays
  - ortho film
  - lantern slides
  - glass negatives
- For standard 35mm or medium format film scans see "Individual Film Scans" .

### Options & Extras:

- Files saved as JPEG or Tiff
- Digital Download - \$8.00
- USB Transfer (customer provides USB drive) - \$8.00
- Convert to another file type - \$2.50 per image
- Cropping or Sizing - \$2.75 per image
- Rename files - \$1.00 per image
- For standard 35mm or medium format film scans see "Individual Film Scans" .
- For restorative work see "Digital Restorations & Retouching".

File Size	Original up to 8.5x11	Original up to 12x18	Print Size
Up to 6Mb	7.00	9.25	Up to 4x6
Up to 10 Mb	10.50	13.75	5x7 & 6x9
Up to 25 Mb	15.75	20.50	8x10 to 8x12
Up to 50 Mb	23.50	30.75	11x14 to 16x24
Up to 100 Mb	35.50	46.00	20x24 to 24x36
Up to 250 Mb	53.00	69.00	30x40 to 30x50
Over 250 Mb	.21 per Mb	.28 per Mb	

- Add 50% for film originals

### Turn-around: 2 Days

24hr. Rush + 50%  
 4-6hr. Rush +100%  
 2-4hr. Rush +150%

### Volume Discounts:

10+ - 10%  
 25+ - 15%  
 50+ - 20%

McGreevy

**PROLAB****& ProPress****Professional Quality Photo Lab & Press Printing Services****518-426-1039**

## Restorations

Restoration is a process of repairing and rebuilding old or damaged photographs. Your original is first scanned or digitally photographed causing it no harm and then the image is digitally restored. Each restoration job is unique and the price to restore the image is determined by the condition of the original and the objectives of the customer. After looking at your original we can provide you with an estimate of the "photo restoration time" needed and then you can choose from one of the cost saving packages offered below.

All Restoration Packages Include:	Photo Restoration Time				
	1/4 hr.	1/2 hr.	3/4 hr.	1 hr.	1.5 hr.
<ul style="list-style-type: none"> <li>A scan of your original</li> <li>Photo restoration time</li> <li>5x7 or 8x10 approval print (glossy or matte)</li> <li>Digital Download of completed image</li> </ul>	\$53.00	74.00	\$94.00	\$121.00	\$155.00

## Retouching

Sometimes small imperfections detract from that otherwise perfect photograph. Our retouching artists can remove those flaws without a trace of the original problem. Because each circumstance is different we have put together a list of "Standard Retouching Items" where you can choose one or more of the appropriate retouching solutions. (Turn-around: 48hr.) Prices do not include scanning.

Standard Retouching Items: (pick from the list below)		One Head
<ul style="list-style-type: none"> <li>Smooth out minor facial lines</li> <li>Remove minor skin blemishes or small scars</li> <li>Remove minor circles under eyes</li> <li>Brighten eyes</li> <li>Remove eyeglass glare (obstructs less than 50% of the eye)</li> <li>Remove eyeglass shadows</li> <li>Stray hairs removed</li> </ul>	<ul style="list-style-type: none"> <li>Whiten teeth</li> <li>Remove/tone down shine</li> <li>Remove small object</li> <li>Extreme color correction</li> <li>Sharpen out-of-focus image</li> <li>Removal of minor dust or scratch</li> <li>Repair minor damage</li> </ul>	\$14.00 pick one item \$22.00 pick two items \$33.00 pick three items \$9.00 each additional Item
	<ul style="list-style-type: none"> <li>Red-eye removal</li> </ul>	\$6.00 per head

- Digital Download - \$8.00
- More complex retouching requirements will be billed by the hour (see Creative Services below).

## Creative Services (Hourly)

At McGreevy ProLab & ProPress we have an experienced creative and technical staff who are well versed in a wide range of imaging applications. Whether it be complex retouching, restorations, layout & design, photo composites, collages, book or calendar projects, special file prep, etc., we have the expertise to get the job done right. Our creative services are billed by the hour and we provide a cost estimate before starting the work.

\$96.00 hr. (billed in 10 minute increments)	
Discounts	
3+ hours	-10% (\$86 hr.)
6+ hours	-20% (\$77 hr.)
12+ hours	-30% (\$67 hr.)

- Digital Download - \$8.00

McGreevy

**PROLAB****& ProPress****Professional Quality Photo Lab & Press Printing Services****518-426-1039**

## Frontier Prints from Digital Files (page 1 of 2)

These are high quality continuous tone photographic prints made on Fuji Crystal Archive paper (75yr. archival rating). At 300 ppi (pixels per inch) this is the highest quality continuous tone photographic printing available. We can make prints from your digital camera files, scans, Photoshop files, graphic designs, basically any image created by or scanned into your computer can be imaged on the Frontier as long as it is converted to RGB color.

	Quality	
	Standard Glossy or Matte	Metallic Pearl
4x6, 4x5, 3.5x5	0.94	NA
5x7, 5x5	3.75	NA
6x9	5.00	NA
8x10, 8x8	7.00	9.50
8x12	8.50	11.50
10x10	11.50	15.50
10x13	14.00	19.00
10x15	16.50	22.00
Wallets (8)	7.00	9.50

We offer three levels of Frontier prints.

- Quality
- Print Ready
- Premium

See following page for a description of each.

**Turn-around: 2 Days**

24hr. Rush +50%  
6-8hr. Rush +100%  
2-4hr. Rush +150%

Discounts	
<b>Print Ready</b>	-35%
<b>Multi-Quantity</b> same image / same size	
<b>10+</b>	-35%
<b>25+</b>	-45%
<b>50+</b>	-55%
<b>100+</b>	-65%
<b>250+</b>	-70%
Discounts can not be combined	

- Purchase a Digital Download of the final corrected images - \$8.00

**Metallic Pearl Paper!** (Available 8x10 and up) This extraordinary photo paper has a wonderful translucent metallic glossy surface. It's unique property comes from mica crystals that are crushed and embedded in the emulsion and then covered with a thin layer of metal oxides. Through an interplay of transparency and refraction, one can discern an opalescent effect with silver-white and metallic reflections, much like the surface of an actual pearl. Great for both color and black & white images, Metallic Pearl paper is a true sensation for the eye.

## Volume Discounts

All files must have the same printing instructions—**print size, quantity and paper surface must be consistent.**

	Quality - Glossy or Matte Metallic Paper—Add 35%					Print Ready - Glossy or Matte Metallic Paper—Add 35%				
	10+	25+	50+	100+	250+	10+	25+	50+	100+	250+
Total # of Prints	10+	25+	50+	100+	250+	10+	25+	50+	100+	250+
4x6, 4x5, 3.5x5	0.71	0.63	0.57	0.51	0.46	0.46	0.41	0.37	0.33	0.30
5x7, 5x5	3.19	2.87	2.58	2.32	2.09	2.07	1.86	1.68	1.51	1.36
6x9	4.25	3.83	3.44	3.10	2.79	2.76	2.49	2.24	2.01	1.81
8x10, 8x8	5.95	5.36	4.82	4.34	3.90	3.87	3.48	3.13	2.82	2.54
8x12	7.23	6.50	5.85	5.27	4.74	4.70	4.23	3.80	3.42	3.08
10x10	9.78	8.80	7.92	7.13	6.41	6.35	5.72	5.15	4.63	4.17
10x13	11.90	10.71	9.64	8.68	7.81	7.74	6.96	6.27	5.64	5.07
10x15	14.03	12.62	11.36	10.22	9.20	9.12	8.20	7.38	6.65	5.98

McGreevy

**PROLAB****& ProPress****Professional Quality Photo Lab & Press Printing Services****518-426-1039**

## Frontier Prints from Digital Files (page 2 of 2)

### Three levels of Frontier printing from Digital Files:

**Print Ready** - Exercise total creative control and save money. This service is designed for those who have a working knowledge of Photoshop and want to prepare their own files. If you operate in an accurately color calibrated environment you can expect amazingly predictable results. With this service we offer no cropping, image manipulation or color correction. **"Print Ready" image files should be ready to run without preview.**

#### Frontier "Print Ready" Criteria

- Files must be flattened, uncompressed, and have no alpha channels. RGB - JPEG (baseline standard.)
- Files should be embedded with an Srgb profile.
- Files must be 8 bits color per channel.
- All files are printed "full image".
- Images do not have to be specifically sized, but should be proportional to the print size ordered.
- Images not proportional to the print size ordered will have borders on two sides.
- If you include custom borders, the file must be sized in inches to one of our standard Frontier sizes.
- Standard 1/4" borders are an option, the Frontier can add these on the fly.
- Files will be printed "as is" as provided by the customer.

**Quality** - The majority of our customers use this category. All aspects of file management as described above in "Print Ready" are attended to by our technicians. All images are corrected for proper color balance and density. Prints are available borderless or with a 1/4" white border. Cropping is available for an extra \$2.00 per image, but the crop must be proportional to the print size chosen. This service does not allow for special sizing, special borders, precise color match, burning, dodging or any kind of special image manipulation. See the "Premium" service below for more options.

Borderless or 1/4" white border

Images not proportional to the print size chosen will automatically be center cropped.

Cropping - Add \$2.75 per image (must be proportional to print size)

Files must be RGB - JPEG or Tiff. Conversion from another file type - \$2.75 ea.

Convert color to b&w or sepia - \$2.75 ea.

Digital Download of corrected files - \$8.00

Trim Wallets - Add \$2.00 per page

Remove red-eye, smooth skin blemishes, sharpen, etc. see "Retouching"

**Premium** - This is our absolute finest custom printing. Your digital images are corrected for accurate color, density, contrast, and saturation. Burning, dodging and localized adjustments are performed to achieve the best image quality. Special sizing, cropping, and borders are all done to your exact specifications. Once an image file has been printed "Premium", all subsequent prints or quantities from the corrected file can get charged at the lower "Quality" price.

Premium Frontier Prints from Digital Files								
	4x6	5x7	6x9	8x10	8x12	10x10	10x13	10x15
1'st—Glossy or Matte	4.75	9.75	11.75	14.75	16.50	18.25	20.50	22.00
1'st—Metallic Pearl	NA	NA	NA	17.50	20.75	23.00	25.50	27.50
Addl.	Use "Quality" pricing on previous page.							

- Purchase a Digital Download of the corrected images - \$8.00



McGreevy

**PROLAB**  
& ProPress

Professional Quality Photo Lab &amp; Press Printing Services

518-426-1039

## Large Format Photo Prints (page 1 of 2)

Printed on Epson Ultra Premium Luster Photo Paper with a thick 10 mil RC base (weight = 260gsm), this paper has the look and feel of a traditional matte photo paper but with the added advantage of 12-color pigment ink printing technology.

With a recent equipment upgrade, our Chromira printer has been replaced; now our Large Format Photo Prints are printed on the same printer as our Fine Art Giclee and Canvas prints. This upgrade provides a significant advantages in regards to increased color fidelity, print longevity, and consistency across media types. A wider color gamut, richer saturation, deeper blacks, more brilliant whites, outstanding definition and detail make these prints truly stunning.

Our advanced color management system ensures that each media type is individually profiled for it's unique surface characteristics, ink absorption rate and true color response. The result is highly accurate, consistent color balance. Our printer utilizes a 12-color pigment ink technology that has remarkable archival permanence ratings in excess of 150 years. In addition, it incorporates a clear Chroma Optimizer top coat which smooths the ink surface and enhances the colors.

The quality of the final print is greatly effected by the source and preparation of the digital file. Many factors come into play, especially when printing large. File type, size, resolution, profiling, and color management are just the beginning. Our skilled technicians are well versed in all aspects of file management and will work hard to ensure your image prints to the very best of it's potential. If your original is film or flat art, high quality scanning is essential. We have a full line of professional scanning equipment and can advise you of the best method to suit your needs. The price of scanning is not included in the print price.

**We offer two levels of printing ("Custom" & "Print Ready").  
For a complete description of each, see the following page.**

	Custom
11x14	22.00
12x18	30.00
16x20	41.00
16x24	47.00
20x24	56.00
20x30	66.00
24x30	75.00
24x36	84.00
30x40	112.00
30x45	127.00
36x48	152.00
40x60	193.00
40x60+	11.60 / sq. ft.

Discounts	
<b>Print Ready</b>	-20%
<b>Multi-Quantity</b> same image / same size	
<b>2+</b>	-20%
<b>5+</b>	-25%
<b>10+</b>	-30%
Discounts can not be combined	

---

**Turn-around: 2 Days**

24hr. Rush +50%  
6-8hr. Rush +100%

---

- Purchase a Digital Download of the corrected images - \$8.00
- Gang - print two images on one piece of paper (saves money on panoramics) - add \$15.00 - includes trimming
- For display and framing, we recommend mounting prints to GatorFoam - See "Mounting & Laminating"

McGreevy

**PROLAB**  
**& ProPress**

Professional Quality Photo Lab &amp; Press Printing Services

518-426-1039

## Large Format Photo Prints (page 2 of 2)

### Two levels of printing:

**Print Ready** - Exercise total creative control and save money. This service is designed for those who have a working knowledge of Photoshop and operate in a color calibrated environment. **"Print Ready" image files should be ready to run without preview.**

#### "Print Ready" Criteria

- Files must be flattened, uncompressed, RGB, JPEG or Tiff.
- Files must not have alpha channels.
- Files must be embedded with Srgb, Adobe 1998, or ProPhoto RGB profile.
- Files must be sized in inches to desired print size.
- Files must include borders (if desired).
- Files must be 8 bits color per channel.
- Files should be cleaned at 100% pixel size and color corrected.
- Files will be printed "as is" as provided by the customer.

**Custom** - The majority of our customers use this category. All aspects of file management as described above in "Print Ready" are attended to by our technicians. Images are corrected for accurate color, density, contrast, and saturation. Burning, dodging and localized adjustments are performed to achieve the best image quality. Special sizing, cropping, and borders are all done to your exact specifications. For important work it is advised that the customer purchase a Digital Download of the final image for safe keeping.

### Volume Square Footage Discounts - "Print Ready" Orders Only

This pricing is not available for "Custom" orders.

Entire Order Square feet	12+	24+	36+	48+	60+	72+	84+
Luster	10.78	9.40	8.99	8.58	8.17	7.76	8.08
Add \$3.00 per print for trimming or receive uncut in a roll to trim yourself.							

- Files must be prepared by customer according to the criteria listed above in "Print Ready".

McGreevy

**PROLAB****& ProPress**

Professional Quality Photo Lab &amp; Press Printing Services

518-426-1039

## Mounting & Laminating

Professional mounting and laminating will protect and show off your prints to the best of their potential. We use pressure sensitive adhesives which offer the very best protection and longevity to photographic prints. We recommend that all prints 11x14 and larger be mounted for display. Mounting keeps the prints perfectly flat eliminating waves and reducing glare on the print surface.

Standard Sizes	3/16" GatorFoam	1/2" GatorFoam	Luster Laminating
8x10	19.80	24.75	15.84
8x12	22.00	27.50	17.60
11x14	27.50	34.38	22.00
12x18	33.00	41.25	26.40
16x20	39.60	49.50	31.68
16x24	52.80	66.00	42.24
20x24	58.08	72.60	46.46
20x30	66.00	82.50	52.80
24x30	71.28	89.10	57.02
24x36	79.20	99.00	63.36
30x40	112.70	140.88	90.16
30x45	120.75	150.94	96.60
36x48	135.24	169.05	108.19
36x60	154.56	193.20	123.65

- We will mount only prints made in-house.
- **Matted Mount** - add \$15.00 ea.

**GatorFoam:** Available in black, GatorFoam is a unique, lightweight, structural panel with enhanced integrity, durability and moisture resistance. GatorFoam's exceptional rigidity, surface quality and durability make it the best mounting board for photographs. GatorFoam is much higher quality than the standard Foamcore or MightyCore products.

**Thickness:** For the best rigidity we recommend using 1/2" GatorFoam for any prints larger than 20x24. If you intend to frame the mounted print, 3/16" is probably the better choice at any size. This ensures that the mounting substrate will not be too thick for the frame.

**Lamination:** Luster lamination protects and enhances the appearance of your photograph. Lamination will lengthen the life of an image by protecting it from moisture, physical damage, dirt, harmful gases and UV light.

**Flush Mount vs Matted Mount** - A "flush mount" is when the print is mounted even with the edges of the substrate. These are perfect for putting directly into a frame or hanging "as is".

If you intend to window matt and frame, then you will want a "matted mount". The print is centered on the substrate with a border to match your matt size.

Hanging Options
<b>Velcro</b> - \$12.00 (Attached and ready to hang)
<b>Metal Hangers &amp; Wire</b> - Attached and ready to hang Mounts up to 30" (long side) = \$15.00 Mounts over 30" (long side) = \$20.00
<b>Floater Blocks</b> - 1/2" deep spacers are attached directly to the back of the mounted print, allowing the image to be hung so it appears to be floating off the wall. Hardware included - ready to hang. Mounts up to 20" (long side) = \$17.50 Mounts 21" to 30" (long side) = \$22.50 Mounts over 30" (long side) = \$30.00
<b>Do it yourself supplies:</b> Velcro - \$3.00 per foot Foamboard hangers - \$2.00 pair Wire - \$1.00 per foot Picture wall hanger w/nail - \$1.00 ea. Rubber bumpers - 4 for \$1.00

### Turn-around:

3 Days.

48hr. Rush + 25%

24hr. Rush + 50%

### Volume Discounts:

10+ - 5%

20+ - 10%

### You're not limited to just the standard sizes!

Use this chart to calculate the cost of virtually any size.

Cost per linear inch (width + height)

Example: 10x20 (10+20) = 30" linear (30 x \$ 1.10 = \$33.00)

Width + Height	3/16" GatorFoam	1/2" GatorFoam	Laminating
Up to 36"	1.10	1.38	.88
37" to 60"	1.32	1.65	1.06
61" +	1.61	2.01	1.29
Max Size: 36" x 94"			

McGreevy

**PROLAB**  
**& ProPress**

**Professional Quality Photo Lab & Press Printing Services**

**518-426-1039**

McGreevy

**PROLAB**

Professional Quality Photo Lab &amp; Press Printing Services

**& ProPress**

518-426-1039

## Digital Capture - Artwork / Copy Photography

McGreevy ProLab & ProPress specializes in photography of two dimensional fine art (drawings, paintings, collage, etc.). Our studio space has been designed to accommodate flat art up to as large as 60" x 84". We make high quality digital camera capture that is closely matched to the color and density of the original artwork. **Original art should be "camera ready", unframed and clean.**

### 35mm Digital Capture

Our 35mm Digital Capture provides an excellent quality digital file that is perfect for promotional endeavors such as "Call for Entries", school applications, slide imaging, exhibition announcements, post cards, folded cards, portfolio prints, web site, email, etc. The maximum file size is 50mb (measured at 8 bits per channel), but depending on the proportions of your artwork the final file size will be somewhat smaller. Our 35mm Digital Capture is well suited for prints up 12x18 at 300 DPI. If you intend to make Giclée fine art reproductions (even at small print sizes) use our BetterLight Digital Capture (see below).

Original Art	
up to 30x40	24.00
up to 60x84	36.00
Detail (close-up)*	18.00

#### Options & Extras:

- Includes Digital Download or USB Transfer (Customer provides USB drive)
- Files are RGB Jpeg format.
- Rename files - \$1.00 per image
- Special Cropping or Sizing - \$3.00 ea.

#### Turn-around: 3 days

48hr. Rush: add \$5.00 per artwork.  
 24hr. Rush: add \$10.00 per artwork  
 6-8hr. Rush: add \$20.00 per artwork  
 While you wait: add \$30.00 per artwork

Volume Discounts	
10+	-10%
20+	-15%
35+	-20%

\* "Detail" price available only if a full view of the same piece is also ordered.

### BetterLight Digital Capture

Our BetterLight Large Format Digital Capture System is capable of creating absolutely breathtaking images up to a enormous 309mb file size. With absolute corner to corner sharpness, BetterLight's pure RGB pixel data captures billions of colors with outstanding detail and clarity. Hands down this is the worlds finest method for capturing original art. BetterLight Capture is a must for Giclée fine art reproductions and anytime you need the absolute best image quality. It is not just a question of obtaining a large enough file size to make a print, the BetterLight is superior in regard to color accuracy, tonal control, dynamic range, and the rendering of fine detail.

\$1.38 per MB up to 50MB
\$0.69 per addl. MB over 50MB
35mb min. / 309mb max. Art over 30" x 40" - add 20.00 Maximum art size is 60" x 72"

#### Options & Extras:

- Includes Digital Download or USB Transfer (Customer provides USB drive)
- Files are RBG Tiff format.
- Downsized Jpeg file - add \$3.00

#### Turn-around: 3 days

48hr. Rush: add \$15.00 per artwork  
 24hr. Rush: add \$20.00 per artwork  
 6-8hr. Rush: add \$35.00 per artwork  
 While you wait: add \$50.00 per artwork

Pricing is determined by the file size needed to make a print at 250 ppi. (measured in megabytes at 8 bits per channel)	<b>i.e.</b> 12x18 @ 250ppi = 38mb (\$52.44) 16x20 @ 250ppi = 57mb (\$73.83) 20x24 @ 250ppi = 86mb (\$93.84) 24x30 @ 250ppi = 130mb (\$124.20) 30x40 @ 250ppi = 215mb (\$182.85)
---	---

Volume Discounts	
5+	-10%
10+	-15%
25+	-20%

McGreevy

**PROLAB**

Professional Quality Photo Lab &amp; Press Printing Services

**& ProPress**

518-426-1039

**Giclée Printing** - Fine Art Paper & Canvas (page 1 of 5)

**About Our Service:** Here at McGreevy ProLab & ProPress we have invested a tremendous amount of expertise and resources into building a truly top notch Giclée printing department. The quality of our Giclée will rival any you could find throughout the country. We use only the finest quality archival artist grade paper and canvas. Our advanced high fidelity color management system ensures that each media type is individually profiled for it's unique surface characteristics, ink absorption rate and true color response. The result is highly accurate, consistent color balance that is repeatable across all media types. Our Giclée printer utilizes a 12-color pigment ink technology that has remarkable archival permanence ratings in excess of 150 years. The wide color gamut, rich saturation, deep blacks, definition and detail make these prints truly stunning.

**Original Art Reproductions:** Reproduce your artwork and photography as limited editions that will truly impress even the most demanding art collectors. Accurately reproducing an original work of art is an intricate process that demands the patience of a skilled technician and a keen eye for color. They say it's all in the preparation, and that couldn't be more true. Far and away the most critical steps of this process begin with highly accurate "Digital Capture" and then "Color Match Approval Printing".

**Digital Capture** (copy photography) - We use the BetterLight Large Format Digital Capture System which is capable of creating absolutely breathtaking images up to a enormous 309Mb file size. With absolute corner to corner sharpness, BetterLight's pure RGB pixel data captures billions of colors with outstanding detail and clarity. Hands down this is the worlds finest method for capturing original art. Our standard turn-around for this phase of the project is three working days. The cost of our BetterLight Digital Capture is based on the file size needed to make the final print at 250 ppi (see " BetterLight Digital Capture" for pricing).

**Color Match Approval Printing** - Our BetterLight Digital Capture is truly phenomenal, but the image is far from being ready to print directly out of the camera. Photoshop adjustments must be made for exact size, cropping, contrast, luminosity, color saturation, and a host of other considerations. Finally when the image on the monitor represents a close match to the artwork, we make a series of small crop test prints and compare our results to the original. This process often requires several rounds of additional adjustments and test printing until everything begins to fall into place. The final approval prints we provide to the artist will include an 8x10 of the full artwork. This approval print allows the artist to inspect the color, density and detail of an image as well as suggest any changes required before a full size print is made.

Width + Height (of final full size print)	Color Match Approval Printing
Up to 36" (up to 16x20)	\$43.00
37" to 60" (up to 24x36)	\$54.00
61"+ (over 24x36)	\$68.00
<b>Includes an 8x10 print and Digital Download</b> (\$32 Value!)	
Price based on (width + height) of the final full size print. i.e.: 20x24 (20+24) = 44" (\$54.00)	

- Approval prints are mandatory for all artwork reproductions.

**Turn-around:**

Does not include "Digital Capture".

**Normal: 2 Days**

24hr. Rush +50%

6-8hr. Rush +100%

**Note:** Although we can get very close to the general look and feel of the original, exact matching of artwork is unattainable and unrealistic. A fine art Giclée print is a unique entity, in an alternate medium from the original, and should be evaluated as such. We offer this friendly cautionary advice for those perfectionists who seek an exact replica of their original creation.

McGreevy

**PROLAB****& ProPress**

Professional Quality Photo Lab &amp; Press Printing Services

518-426-1039

**Fine Art Paper Giclée Printing** (Giclée—page 2 of 5)

**You're not limited to just the standard sizes!**  
Use this chart to calculate the cost of virtually any size.

Width + Height	Custom 1'st
Up to 36"	\$ 1.47
37" to 60"	\$ 1.69
61" +	\$ 2.06

Price is determined by (width + height)  
**Example:** 20x30 print  
20"+30" = 50"  
50 x \$1.69 = \$84.50

- **Linear Inch Pricing** - Price is determined by (width + height) of the print.  
Example: 20x30 print, (20"+30") = 50", 50 x \$1.69 = \$84.50. With this you can calculate the cost of virtually any size print.
- **Digital Download** - Purchase a *Digital Download* the corrected files for \$8.00. If you paid for *Color Match Approval Printing* the Digital Download is included.
- **In-House Archiving** - We automatically archive all Giclée final print files for convenient re-ordering, but we want to be clear that these files are not stored indefinitely and we are not responsible for the safekeeping of customers files.
- **Maximum Width** - 44" is our widest print. There are no limitations on length.
- **Panoramic** - Any image with more than 1:2 ratio that is longer than 44", will be charged for the entire width of the roll needed to make the print (either 24" or 44").
- **Re-Orders** - In the process of making your Custom 1'st print, we essentially create a file that is "Print Ready". All subsequent reprints from this file will qualify for the lower "Print Ready/Re-Order" price, provided there are no changes.

**Turn-around:**

Does not include "Digital Capture"  
or "Color Match Approval Printing".

**Normal: 2 Days**

24hr. Rush +25%  
6-8hr. Rush +50%

**1" Free  
Border Included!**

**Discounts**

<b>Re-Orders &amp; Print Ready</b>	-15%
<b>Quantity Discounts</b> same image / same size	
<b>2+</b>	-15%
<b>5+</b>	-25%
<b>10+</b>	-35%
<b>Volume Discounts</b> mix & match sizes	
<b>10+</b>	-10%
<b>20+</b>	-15%
<b>30+</b>	-20%
Discounts can not be combined.	

**Linear Inch Pricing Calculated for Common Sizes**

All Fine Art Paper choices are the same price—Includes 1" Free Border

	Custom 1'st	Print Ready & Re-Orders 1'st	2+	5+	10+
8x10	26.46	22.49	22.49	19.85	17.20
8x12	29.40	24.99	24.99	22.05	19.11
11x14	36.75	31.24	31.24	27.56	23.89
12x18	44.10	37.49	37.49	33.08	28.67
16x20	52.92	44.98	44.98	39.69	34.40
16x24	67.60	57.46	57.46	50.70	43.94
20x24	74.36	63.21	63.21	55.77	48.33
20x30	84.50	71.83	71.83	63.38	54.93
24x30	91.26	77.57	77.57	68.45	59.32
24x36	101.40	86.19	86.19	76.05	65.91
30x40	144.20	122.57	122.57	108.15	93.73
36x48	173.04	147.08	147.08	129.78	112.48
36x60	197.76	168.10	168.10	148.32	128.54
40x60	206.00	175.10	175.10	154.50	133.90



McGreevy

**PROLAB**

Professional Quality Photo Lab &amp; Press Printing Services

**& ProPress**

518-426-1039

**Fine Art Paper Giclée Printing** (Giclée—page 3 of 5)**Fine Art Paper Choices:** *(All paper types are the same print price)*

**Somerset Velvet:** Since the 1700's, Somerset has been made in England by St. Cythberts Paper Mill. This 100% mould-made cotton rag paper has a softly textured surface with the look and feel of a traditional watercolor paper. The base color is considered "radiant" white, which delivers vivid color reproduction and exceptional contrast. The D-max (black) is not as deep as with the German Etching or UltraSmooth, but the soft beautiful look of images on Somerset Velvet make it one of our most requested papers. Acid free. Weight = 255gms.

**UltraSmooth Fine Art Paper:** This 100% cotton hot press rag paper has an extremely smooth surface for incredible detail, outstanding D-max (black), exceptional contrast and vivid color reproduction. The base color is "natural white" with a slight cream color. This paper is not only acid free, but it is also lignin and chlorine free, with a calcium carbonate pH buffer for superior archival properties. Weight = 250gms.

*Samples available upon request***Two levels of Giclée printing:**

**Print Ready** - Exercise total creative control and save money. This service is designed for those who have a working knowledge of Photoshop and operate in a color calibrated environment. **"Print Ready" image files should be ready to run without preview.**

**Giclée "Print Ready" Criteria**

- Files must be flattened, RGB, Jpeg or Tiff.
- Files must not have alpha channels.
- Files must be embedded with Srgb, Adobe 1998, or ProPhoto RGB profile.
- Files must be sized in inches to desired print size.
- Files must include borders (if desired).
- Files must be 8 bits color per channel.
- Files should be cleaned at 100% pixel size and color corrected.
- Files will be printed "as is" as provided by the customer.
- Real time interpolation and media output profile are provided at time of printing.

**Custom** - All aspects of file management as described above in "Print Ready" are attended to by our technicians. Images are corrected for accurate color, density, contrast, and saturation. Burning, dodging and localized adjustments are performed to achieve the best image quality. Special sizing, cropping, and borders are all done to your exact specifications.

- Purchase a *Digital Download* the corrected files for \$8.00

**Note:** Artists who are reproducing paintings and drawings will require **Digital Capture** of the original art as well as **Color Match Approval Printing**. Please see those sections for pricing and turn-around times.

McGreevy

**PROLAB**

Professional Quality Photo Lab &amp; Press Printing Services

&amp; ProPress

518-426-1039

**Canvas Giclée Printing** (Giclée—page 4 of 5)

Standard Sizes	Loose Canvas 2" Free Border		Stretched Canvas				Mounted Canvas	
	Uncoated	Coated	Standard Stretch ¾" Bars	Gallery Wrap ¾" Bars	Gallery Wrap 1½" bars	Gallery Wrap ¾" Bars With Floater Frame	3/16" GatorFoam	1/2" GatorFoam
8x10	27.18	37.98	54.36	59.76	65.16	103.86	57.78	62.82
8x12	30.20	42.20	60.40	66.40	72.40	-	64.20	69.80
11x14	37.75	52.75	75.50	83.00	90.50	144.25	80.25	87.25
12x18	45.30	63.30	90.60	99.60	108.60	-	96.30	104.70
16x20	54.36	75.96	108.72	119.52	130.32	207.72	115.56	125.64
16x24	69.60	92.40	127.20	139.20	150.80	237.20	145.20	158.40
20x24	76.56	101.64	139.92	153.12	165.88	260.92	159.72	174.24
20x30	87.00	115.50	159.00	174.00	188.50	-	181.50	198.00
24x30	93.96	124.74	171.72	187.92	203.58	-	196.02	213.84
24x36	104.40	138.60	190.80	208.80	226.20	-	217.80	237.60
30x40	148.40	190.40	254.10	275.80	296.80	-	303.10	331.10
36x48	178.08	228.48	304.92	330.96	356.16	-	363.72	397.32
36x60	203.52	261.12	348.48	378.24	407.04	-	415.68	454.08
40x60	212.00	272.00	-	-	-	-	-	-
Turn-Around	2 Days 24hr. Rush +25% 6-8hr. Rush +50%	3 Days 2 day Rush +25% 24hr. Rush +50%	4 Days 3 Day Rush +25% 2 day Rush +50%					

Discounts	
Re-Orders & *Print Ready	-10%
Quantity Discounts same image / same size	
2+	-10%
5+	-15%
10+	-20%
Volume Discounts mix & match sizes	
10+	-10%
20+	-15%
30+	-20%
Discounts can not be combined.	

You're not limited to just the standard sizes!							
Use this chart to calculate the cost of virtually any size. Cost per linear inch (width + height) - Example: 10x20 (10+20) = 30" linear (30 x \$3.00 = \$90)							
Width + Height	Canvas		Stretched Canvas			Mounted Canvas	
	Uncoated	Coated	Standard ¾" bars	Gallery Wrap ¾" bars	Gallery Wrap 1½" bars	3/16" Gator- Foam	1/2" Gator- Foam
Up to 36"	1.51	2.11	3.02	3.32	3.62	3.21	3.49
37" to 60"	1.74	2.31	3.18	3.48	3.77	3.63	3.96
61" +	2.12	2.72	3.63	3.94	4.24	4.33	4.73
Notes	Max Size: 44" wide x any length		Max size: 36" x 60" Mix and match any two standard bar lengths to make a custom size.			Max size: 30" x 94"	

\* The *Print Ready* discount is only available on "loose" canvas. It is not available on "stretched" or "mounted" canvas products. The *Re-Orders* discount is available on all canvas products. For *Print Ready* criteria, see *Fine Art Paper Giclée Printing*.

McGreevy

**PROLAB**

Professional Quality Photo Lab &amp; Press Printing Services

&amp; ProPress

518-426-1039

**Canvas Giclée Printing** (Giclée—page 5 of 5)

**Uncoated Canvas:** (Premium Artist-grade Canvas) This tight-weave heavyweight canvas is made from a durable blend of 65% polyester and 35% cotton. This cotton/poly formulation is critical, as it allows the canvas to be stretched without sagging. The surface is factory primed with a special matte coating optimized for giclée printing. The image quality is superb with excellent D-max (blacks), nice contrast, and true color reproduction. **Includes 2" Free Border.**

**Coated Canvas:** We apply a clear satin varnish coating that is specifically designed for giclée canvas. It protects the surface from moisture, abrasion, dirt, harmful gases and UV light, while also providing a beautiful varnish-like finish that enhances the richness and vibrancy of the colors. The elastic properties of the varnish coating allows it to stretch with the canvas. **Includes 2" Free Border**

**Standard Stretch:** Printed on premium artist-grade canvas and then stretched over standard  $\frac{3}{4}$ " thick stretcher bars, this traditionally stretched canvas print is ready for framing. All stretched canvases are finished with a durable clear satin varnish coating that protects the surface while enhancing the richness and vibrancy of the colors.

We stock a large selection of standard stretcher bar sizes which can also be mixed and matched to create a multitude of non-standard sizes as well. We can also special order stretcher bars (available in one inch increments from 8" up to 50"). Add an **additional \$18** for special order of **non-stock stretcher bars sizes.**

**Gallery Wrap:** Gallery wraps are beautiful finished works of art – ready to hang. Printed on premium-artist grade canvas, the image is completely wrapped around the sides of a standard  $\frac{3}{4}$ " or sturdy  $1\frac{1}{2}$ " thick stretcher bars, eliminating the need for framing. All Gallery wraps are finished with a durable clear Satin varnish coating that protects the surface while enhancing the richness and vibrancy of the colors. We even include the hanging hardware, so it couldn't be easier! Gallery Wraps are perfect for interior decorating and they also make wonderful gifts. They really are an excellent value; you get printing, stretching, coating, hanging hardware and a beautifully finished piece all for less than the cost of just one custom frame.

We stock a large selection of both  $\frac{3}{4}$ " and  $1\frac{1}{2}$ " thick Gallery Wrap stretcher bar sizes which also can be mixed and matched to create a multitude of non-standard sizes as well. We can also special order the  $\frac{3}{4}$ " stretcher bars (available in one inch increments from 8" up to 50"), but the  $1\frac{1}{2}$ " thick bars are only available in our stock sizes. Add an **additional \$18** for special order of **non-stock  $\frac{3}{4}$ " stretcher bars sizes.**

**Mounted Canvas:** (Includes Coating) Permanently flush mounted to rigid black GatorFoam, ready for framing. *Mounted Canvas* offers several features that make it a more adaptable product than our *Standard Stretched Canvas* and for some projects it could be the better choice. The thinner substrate of a *Mounted Canvas* provides far more flexibility when finding suitable framing. Many frames, especially in the smaller sizes, are just not designed to hold a  $\frac{3}{4}$ " thick stretched canvas, but would work perfectly fine with  $\frac{3}{16}$  or  $\frac{1}{2}$ " thick *Mounted Canvas*. Also, *Mounted Canvas* is available in an infinite possibility of sizes since we can cut the Gator Foam to exact dimensions. This can offer the perfect solution when you need a specific size that is just not possible with our standard stretcher bar lengths. For more information about the mounting process, see the *Mounting & Laminating* page in our price list.

- **Digital Download** - Purchase a *Digital Download* the corrected files for \$8.00. If you paid for *Color Match Approval Printing* the Digital Download is included.

**Note:** Artists who are reproducing paintings and drawings will require **Digital Capture** of the original art as well as **Color Match Approval Printing**. Please see those sections for pricing and turn-around times.

McGreevy

**PROLAB**  
**& ProPress**

Professional Quality Photo Lab &amp; Press Printing Services

518-426-1039

## Proof Albums

This service is very popular with wedding and event photographers. It offers a professional method to present your clients with all the images from a photo shoot in a single booklet. The images are large enough to order from but small enough to discourage illegal copies. The file name is printed under each image. To further enhance the presentation we design a customized cover page absolutely free.

**You have two choices in regard to preprocessing of your digital camera files:**

**1) No Color Correction** - This is good for photographers who have already done their own color correcting.

**2) Technician Color Corrected** - (Add .19 cents per file) Your files are each individually color corrected by a skilled technician. Our technicians color correct thousands of images each week and have a tremendous amount of experience. Using specialized high production color correction software, we evaluate each image for proper color balance, contrast and density. You can even have the color corrected images burned to a CD or USB drive. All files for proof albums are downsized to 4x6 at 300ppi prior to color correcting. We do not recommend these files be printed larger than 8x12.

Proof Albums	
8½x11 Press Printed	13x10 Frontier Printed
<ul style="list-style-type: none"> <li>• Soft Cover Book (perfect bind)</li> <li>• 100 lb. Text Silk Paper</li> <li>• Double Sided Printing</li> <li>• 6 or 12 Images per page</li> <li>• 240 page max. (1440 files at 6 up)</li> <li>• White Background Only</li> <li>• Vertical Format</li> <li>• Free Cover Layout</li> </ul>	<ul style="list-style-type: none"> <li>• Spiral Binding - opens flat</li> <li>• Matte Photo Paper</li> <li>• Single Side Printing</li> <li>• 6 or 12 Images per page</li> <li>• 38 page max. (456 files at 12up)</li> <li>• White or Black Background</li> <li>• Horizontal Format</li> <li>• Mylar Front Sheet</li> <li>• Free Cover Layout</li> </ul>
<b>\$1.25 per page</b>	<b>\$2.95 per page</b>
<b>\$30 Minimum Order</b>	

Provide your images in alpha numeric order the way you want them to appear and rotate them to the correct orientation.

---

**Turn-around: 4 Days**

*3 days Rush +25%*

*2 days Rush +50%*

---

### Free Cover Layout

#### Cover Page Includes:

Single image floated on page with type (event name, location, date).

Customize the type as you see fit.

### Options & Extras

- Technician color corrected - add 19 cents per file.
- CD burn of color corrected files - \$8.00.
- USB burn of color corrected files - \$18.00
- USB burn (customer provides USB) - \$8.00
- FTP Upload - \$8.00 per 250Mb
- Padded album cover for 13x10 - \$29.95

**Beautiful Padded Cover**  
for the 13x10 album  
only \$29.95

McGreevy

**PROLAB****& ProPress**

Professional Quality Photo Lab &amp; Press Printing Services

518-426-1039

## USB Presentation Case - Press Printed

USB drives have become the preferred method to easily store and transport digital content. This unique custom case provides an extremely impressive presentation which has applications in both business and creative fields. It also makes a great gift and is the perfect companion to our *Family Archive Scans* service. For the professional wedding photographer, the USB Presentation Case is stylish way to deliver a completed job and keep those referrals coming.

From the outside it gives the illusion of a small hard cover book. The thick spine and cover are custom printed on both exterior and interior surfaces. It is protected with your choice of a glossy or matt lamination. When opened, you are presented with the USB drive cleverly inserted into a die-cut foam opening.

**Features:**

- Thick hard cover book design
- Laminated Cover
- Die cut foam core
- Full color printing
- Color managed workflow

**Ordering Info:**

- Minimum Order - 1 Case
- File must be ready to print
- Layout & design not included
- See "Design Options" below
- Templates available online

USB Cases			
1	5+	10+	25+
\$30.00	\$25.00	\$20.00	\$18.00
USB Drives (Includes data loading)			
1		5+	
\$17.50		\$15.00	
Basic Layout: \$25.00 (see <i>Design Options</i> below)			

---

**Turn-around:** 3 days

2 days Rush +25%  
24hr. Rush +50%

*More time may be  
needed for projects  
with over ten cases.*

---

**Design Options:** The pricing above is for printing only. Layout & design are not included. Here are two excellent options to help you get the design you need.

**In-house Design** - Let our professional design staff create a one-of-a-kind USB Presentation Case for you. We offer a basic layout option for \$25. This includes an image on the front cover, back cover, and inside cover as well as title on the front cover and spine. If you require a more complex design, our in-house design service is \$88 per hour (billed in 10 minute increments). You supply a rough mockup, images/logo and text, we do the rest. We will provide a cost estimate before starting and an email approval when the design is complete.

**Personal Design Software** - Use your own favorite graphics software (Photoshop, Illustrator, InDesign, etc.). Templates are available for download on our web site so you can prepare your files to the correct specifications for our printing press. Our knowledgeable staff is eager to help with any layout questions you may have. We provide a **free file check** to confirm accuracy before printing.

McGreevy

**PROLAB**  
**& ProPress**

Professional Quality Photo Lab &amp; Press Printing Services

518-426-1039

## Custom Albums (page 1 of 2)

Not just for professional photographers.  
We can help anyone make the perfect wedding album.

It has become common practice for professional photographers to shoot a wedding and then simply provide the bride and groom with the digital image files, leaving it up to them to make their own prints and album. This can be a daunting task, and more often than not—the job never gets done. Let us help you make the professional wedding album you have always wanted. It's easy and affordable!

Our handcrafted photo albums are printed and assembled in-house.  
The quality of materials and workmanship are outstanding  
and all priced to provide a fantastic value.

### We offer two ways to order albums:

**Design, Print & Bind** - We do everything from start to finish: Design, Print and Bind the album. Let our in-house design staff create a one-of-a-kind custom album that will surpass your expectations. All you have to do is choose your favorite pictures and then we take over. We handle every aspect of the design process including lay-out, color management, cropping, sharpening, adding text, conversions to b&w and sepia; basically everything necessary to insure your album and the images in it look their best. We work closely with each client using on-screen approvals to make certain that you are completely satisfied before going to print. Please ask for our hand-out on how to organize and submit your files for in-house album design. (Allow two weeks for custom album design.)

**Print & Bind** - Do your own album design and save money with our *Print & Bind* service. This is a great option for anyone who is computer savvy and likes to take on a do-it-yourself project. (See *Options for Designing the Album Yourself* below)

### Options for Designing the Album Yourself: (required for *Print & Bind* pricing)

**Photoshop, InDesign, Illustrator, etc.** - Use your favorite graphics software to design an album. Templates are available for download on our web site so you can prepare your files to the correct specifications. Our knowledgeable staff is eager to help with any layout questions you may have. We provide a **free file check** to insure accuracy before printing.

**Design Online** - If you want a more consumer friendly option; our online book design software is geared toward standard Hard Cover Books, but with a simple work-around it can be used to design beautiful Custom Albums as well. It's fun and easy, with loads of options that allow you to have absolute creative control. Please call before you get started so we may quickly walk your through the procedure.

McGreevy

**PROLAB****& ProPress****Professional Quality Photo Lab & Press Printing Services****518-426-1039****Custom Albums** (page 2 of 2)

**ProAlbum Deluxe** provides contemporary styling with plush non-leather fabric, clean straight edges, a flat spine, metal tipped page corners and personalized cover imprinting. The album prints are made on beautiful Fuji Crystal Archive matte photo paper and then permanently mounted directly onto thick leaves. The fine quality of our custom albums makes them an excellent choice for weddings, but don't limit yourself, ProAlbum is perfect for any special occasion (engagements, anniversaries, milestone birthdays, outstanding achievements, reunions, etc.)

Album Size 10x10	ProAlbum Deluxe			
	Print & Bind*		Design Print & Bind	
	20 Sides	30 Sides	20 Sides	30 Sides
	\$329	\$419	\$593	\$774

ProAlbum Deluxe - Features
Capacity Options: 10 leaves / 20 Sides 15 leaves / 30 Sides
Cover Material: Fulton Non-Leather Fabric Available in Flint or Dove White
Image Cut-Out Cover (3" x 3")
Contemporary Style—clean straight lines
Flat Spine
Rounded page corners with metal tips
Personalized Cover Imprinting: Two lines of text Up to 25 characters per line.
Four to six week production time



McGreevy

**PROLAB**  
**& ProPress**

Professional Quality Photo Lab &amp; Press Printing Services

518-426-1039

## Promo Prints

Actors, Models, Musicians, Dancers, Entertainers, Performers

Top quality promotional prints are essential for those in the entertainment business. Our **8x10 Headshots** are printed on beautiful Crystal Archive photo paper (color or b&w). Our **Comp Cards** and **Photo Business Cards** are press printed on heavy 110 lb. Silk cover stock. We offer in-house design with a variety of page lay-out options. If you prefer to do your own design we provide template downloads on our web site so you can prepare your files to the correct specifications.

	10	25	50	100	250
8x10 Headshot (Photo Paper)	36.00	62.00	96.00	165.00	345.00
Comp Card - 5½ x 8½ double sided	NA	25.96	38.72	60.61	117.43
Photo Business Card - 2 x 3½ single sided	NA	NA	NA	21.89	39.60
Photo Business Card - 2 x 3½ double sided	NA	NA	NA	27.39	49.50

---

**Turn-around:**

48 hr. - Design &amp; approval

48 hr. - printing

- **8x10 Headshot** is printed on real photo paper (available in glossy or matte).
- **Comp Card & Business Card** are press printed on a heavy Silk 110 lb. cover stock.

**In-House Design:** 8x10 Headshot = **\$22.00**  
 Photo Business Card = **\$44.00**  
 Comp Card = **\$66.00**

**Design Includes:**

- Photo Cropping & Color Correction (as needed).
- Page lay-out and type.
- Talent manager logo or union affiliates (if needed).
- Photographers name (if needed).
- E-mail approval.
- There is no set-up charge on re-orders.
- \$15.00 to update (change) text on re-orders.

**Retouching:** By quote

- Smooth out minor facial lines
- remove minor skin blemishes
- remove minor circles under eyes
- Brighten eyes
- Remove eyeglass glare
- Remove eyeglass shadows
- Stray hairs removed
- Whiten teeth
- Remove/tone down shine
- Remove small object
- Sharpen or soften

**Page lay-out options:** Our in-house designers will offer guidance and suggestions for the best lay-out, but here are a few basics about each product.

**8x10 Headshot** - One image either full bleed or with a border and your name at the bottom.

**Comp Card** - Front side has one image and your name. The backside usually has between 2 to 4 images and contact information.

**Business Card** - One image, name and contact information. For double sided add a second image with only your name on the backside.

**Personal Design Software** - Would like to do your own layout & design? Use your own favorite graphics software (Photoshop, Illustrator, InDesign, etc.). Templates are available for download on our web site so you can prepare your files to the correct specifications for printing. Our knowledgeable staff is eager to help with any layout questions you may have. We provide a **free file check** to confirm accuracy before printing.

McGreevy

**PROLAB**  
**& ProPress**

Professional Quality Photo Lab &amp; Press Printing Services

518-426-1039

## Holiday Greeting Cards

Christmas | Hanukkah | Kwanzaa | New Years

### This Holiday Season let us make beautiful cards for you!

We provide a level of quality, professionalism and personal service that you don't get from the big box stores or high volume online photofinishers.

### All at fantastic prices!

We use only the finest quality materials and all images are individually color corrected by a skilled technician.

### Order in-store or online.

Envelopes Included	Paper Type	25	50	100	250
4x8 Slimline	Photo Paper (Matte)	32.50	61.00	106.00	202.50
5x7 Flat (press printed)	110 lb. postcard stock (Silk or Linen)	49.50	79.00	119.00	237.50
5x7 Folded (press printed)	80 lb. cover stock (Silk or Linen)	69.00	119.00	198.00	395.00
5½ x 5½ Tri-Fold *	80 lb. cover stock (Silk or Linen)	95.00	152.00	228.00	455.00
<ul style="list-style-type: none"> <li>For extra thick folded cards, upgrade to 110 lb. postcard stock - add 10%</li> <li>* Tri-fold card available in-store only (not available online)</li> </ul>					

**Turn-around: 72hrs.**

48hr. Rush +25%  
 24hr. Rush +50%  
 6-8hr. Rush +100%

**In-store Ordering:** Choose a design from our "In-Store Collection" of holiday cards. We will complete the layout with your photo(s) and personalized text. (Included in the cost)

**Custom In-house Design:** If your layout requirements exceed the parameters of our standard templates, we offer additional design at \$88 per hour (billed in 10 minute increments).

**Online Ordering:** On our website, go to the **OnlinePhotoCenter** to design your personalized holiday card. We have an extensive collection of holiday templates (even more choices than our In-store card collection). Our online software is robust yet very easy to use, with loads of options to allow you to take creative control. Pick up in-store or receive by mail.

### Cards for Other Occasions

New Born | Graduation | Engagement | Wedding | Anniversary | Thank You

McGreevy

**PROLAB**  
**& ProPress**

Professional Quality Photo Lab &amp; Press Printing Services

518-426-1039

## General Press Printing

Our four color digital press is perfect for a wide variety of printed products. This General Press Printing category provides a complete list of all of our standard sizes and paper options, allowing you to mix and match to create just the right product to suit your needs. Need a size that's not on our list? – We can do that! We use only the finest quality papers and adhere to strict color management and quality control procedures.

### Features:

- Full Color Printing
- Full Bleed printing included
- Variety of paper stocks
- Single or double sided
- Horizontal or vertical layout
- Color managed workflow

### Ordering Info:

- Minimum Order - 25 units
- File must be ready to print
- Layout & design not included
- Hard Copy Approval - \$7.95

---

**Turn-around: 2 days**

24hr. Rush +25%

6-8 hr. Rush +50%

	A		B		C		D		E		F	
	3½ x 5 4 x 4 4 x 5½		3½ x 8½ 5½ x 5½		5 x 7 5½ x 8½ 4 x 9, 4 x 11		3½ x 17¼ 5½ x 11		8 x 10 8½ x 11 8½ x 8½		11 x 11 11 x 14 11 x 17	
	Single Sided	Double Sided	Single Sided	Double Sided	Single Sided	Double Sided	Single Sided	Double Sided	Single Sided	Double Sided	Single Sided	Double Sided
25+	0.539	0.716	0.615	0.814	0.747	0.983	0.856	1.141	1.047	1.406	1.532	2.107
50+	0.391	0.508	0.444	0.587	0.54	0.719	0.629	0.891	0.782	1.07	1.197	1.645
100+	0.286	0.376	0.331	0.462	0.408	0.551	0.504	0.686	0.615	0.838	0.965	1.364
250+	0.21	0.278	0.245	0.328	0.309	0.415	0.37	0.518	0.479	0.668	0.794	1.067
500+	0.172	0.224	0.201	0.276	0.255	0.351	0.318	0.438	0.414	0.55	0.677	0.966
1000+	0.107	0.145	0.132	0.182	0.182	0.256	0.231	0.331	0.329	0.48	0.626	0.927
Prices above are based on 100 lb. text Silk or Uncoated paper stock or 80 lb. text Linen or Watercolor (price per sheet)												

Paper Options & Upgrades (per sheet)							
		A	B	C	D	E	F
80 lb. Text (118 gsm)	Linen or Watercolor		included in pricing above				
100 lb. Text (140 gsm)	Silk or Uncoated		included in pricing above				
80 lb. Cover (210 gsm)	Silk or Uncoated	.02	.03	.04	.06	.08	.16
	Linen or Watercolor	.05	.07	.10	.14	.20	.40
110 lb. Cover (300 gsm)	Silk or Uncoated	.05	.07	.10	.14	.20	.40
	Linen or Watercolor	.08	.10	.15	.20	.30	.60
Scoring (\$7.50 set-up plus)		.02	.03	.04	.06	.08	.16
Drilling (\$7.50 set-up plus)		.03	.03	.03	.03	.03	.03
Folding		.08	.08	.08	.08	.08	.08

### Custom Size - \$45.00 set-up

We are more than happy to set-up a custom size press product to accommodate your needs.

As an alternative, and to avoid the custom size set-up fee, we can print your odd sized document centered on one of the standard sizes offered above and you can do the trimming.

McGreevy

**PROLAB**  
**& ProPress**

Professional Quality Photo Lab &amp; Press Printing Services

518-426-1039

## Postcards - Press Printed

Get your message out fast with our full color postcards. Great for art openings, grand openings, announcements, introducing new products and keeping in touch with clients. Hand-out or send through the mail, the possibilities are endless. Available in four sizes from "standard" to "jumbo". Each press run is individually checked by our professional staff for quality and color accuracy.

### Features:

- Thick 110 lb. cover stock
- Available in: Silk  
Uncoated  
Linen  
Watercolor
- Full color printing
- Full bleed printing included
- Horizontal or vertical layout
- Color managed workflow

### Ordering Info:

- Minimum Order - 25 Cards
- File must be ready to print
- Layout & design not included
- See "Design Options" below
- Hard Copy Approval - \$7.95



	Standard 4 x 5½		Square 5½ x 5½		Oversize 5 x 7 or 5½ x 8½		Jumbo 5½ x 11	
	Single Sided	Double Sided	Single Sided	Double Sided	Single Sided	Double Sided	Single Sided	Double Sided
25	14.30	18.73	16.48	21.45	20.05	25.96	23.32	30.45
50	21.18	27.06	24.42	31.57	29.76	38.72	35.31	48.40
100	31.90	40.92	37.51	50.60	46.31	60.61	58.08	76.34
250	60.78	77.83	72.33	92.95	91.03	117.43	111.65	148.78
500	102.30	128.70	122.65	160.05	155.10	202.95	197.45	257.40
1000	139.70	178.20	176.00	225.50	236.50	311.30	308.00	408.10
<b>Prices above based on Silk or Uncoated 110 lb. cover stock.</b> <b>Paper Upgrades:</b> Linen or Watercolor (110 lb. cover) - .07 ea.								

---

**Turn-around: 2 days**

 24hr. Rush +25%  
 6-8 hr Rush +50%
 

---

**Design Options:** The pricing above is for printing only. Layout & design are not included. Here are two excellent options to help you get the design you need.

**In-house Design** - Let our professional design staff create a one-of-a-kind postcard for you. Our in-house design service is \$88 per hour (billed in 10 minute increments). You supply a rough mockup, images/logo and text, we do the rest. We will provide a cost estimate before starting and an email approval when the design is complete.

**Personal Design Software** - Use your own favorite graphics software (Photoshop, Illustrator, InDesign, etc.). Templates are available for download on our web site so you can prepare your files to the correct specifications for our printing press. Our knowledgeable staff is eager to help with any layout questions you may have. We provide a **free file check** to confirm accuracy before printing.

McGreevy

**PROLAB**  
**& ProPress**

Professional Quality Photo Lab &amp; Press Printing Services

518-426-1039

## Folded Cards - Press Printed

Our folded cards are perfect for greetings, invitations, thank-you cards, note cards, announcements and so much more. Photographers and artists can create editions featuring their finest works. Great for sales, great for promotion, great for friends & family! Professional color and professional printing for professional results.

### Features:

- 80 lb. or 110 lb. cover stock
- Envelopes included
- Full color printing
- Full bleed printing included
- Horizontal or vertical layout
- Color managed workflow

### Ordering Info:

- Minimum Order - 25 Cards
- File must be ready to print
- Layout & design not included
- See "Design Options" below
- Hard Copy Approval - \$7.95
- Scored for folding and delivered flat
- Folding Optional - Add .08 each



Note card 4¼ x 5½			Square 5½ x 5½		Standard 5 x 7 or 5½ x 8½		Tri-Fold 5½ x 5½ or Quad-Fold 4¼ x 5½		<b>Clear Gift Bags</b> <i>Holds 6 cards/envelopes</i>  <i>Available sizes:</i> <i>note card &amp; 5x7</i>  50¢ ea.
	Single Sided	Double Sided	Single Sided	Double Sided		Single Sided	Double Sided	Single Sided	
25	28.82	34.71	32.07	39.19		37.40	46.15	39.05	47.80
50	41.53	50.27	47.08	60.56		55.61	70.02	58.91	73.32
100	63.91	78.21	76.34	94.49		88.99	111.32	95.59	117.92
250	127.05	153.18	147.68	185.35		180.13	227.43	196.63	243.93
500	221.10	268.95	264.00	324.50		322.30	390.50	355.30	423.50
1000	358.60	433.40	430.10	531.30		552.20	702.90	618.20	768.90
<b>Prices above based on Silk or Uncoated 80 lb. cover stock.</b> <b>Paper Upgrades:</b> Linen or Watercolor (80 lb. cover) - .12 ea. Silk or Uncoated (110 lb. cover) - .12 ea Linen or Watercolor (110 lb. cover) - .22 ea.									
<b>Envelopes Included !</b>  Don't need envelopes? Subtract 10¢ ea.									
<b>Turn-around: 2 days</b>  24hr. Rush +25% 6-8 hr Rush +50%									

**Design Options:** The pricing above is for printing only. Layout & design are not included. Here are a number of excellent options to help you get the design you need.

**In-house Design** - Let our professional design staff create a one-of-a-kind folded card for you. Our in-house design service is \$88 per hour (billed in 10 minute increments). You supply a rough mockup, images/logo and text, we do the rest. We will provide a cost estimate before starting and an email approval when the design is complete.

**Personal Design Software** - Use your own favorite graphics software (Photoshop, Illustrator, InDesign, etc.). Templates are available for download on our web site so you can prepare your files to the correct specifications for our printing press. Our knowledgeable staff is eager to help with any layout questions you may have. We provide a **free file check** to confirm accuracy before printing.

**Design Online** - Online design and ordering is available for our Holiday Greeting Cards, please see that page of our pricelist for more information.

McGreevy

**PROLAB**

Professional Quality Photo Lab &amp; Press Printing Services

**& ProPress**

518-426-1039

**Business Cards - Press Printed**

Make a big impression with a small card. A good business card is one of the best tools for self promotion. It's a tried and true way to increase your contacts and expand your network. Our full color business cards are available as single sided or for a few pennies more you can double the impact by printing on both sides. If you really want to stand out in the crowd our Deluxe Folded Business Cards are like miniature note cards; the inside spread offers plenty of room for extra information or even a coupon.

**Features:**

- Thick 110 lb. cover stock
- Available in: Silk
  - Uncoated
  - Linen
  - Watercolor
- Full color printing
- Full bleed printing included
- Horizontal or vertical layout
- Color managed workflow

**Ordering Info:**

- Minimum Order - 100 Cards
- File must be ready to print
- Layout & design not included
- See "Design Options" below
- Hard Copy Approval - \$7.95
- Deluxe Folded Cards are scored for folding & delivered flat



	<b>Standard 2 x 3½</b>		<b>Deluxe Folded 2 x 3½</b>	
	Single Sided	Double Sided	Single Sided	Double Sided
100	21.89	27.39	32.12	39.27
250	39.60	49.50	53.90	68.20
500	64.35	80.30	88.00	108.90
1000	89.10	107.80	121.00	144.10
<b>Prices above based on Silk or Uncoated 110 lb. cover stock.</b> <b>Paper Upgrades:</b> Linen or Watercolor (110 lb. cover) - .03 ea.				

**Turn-around: 2 days**

24hr. Rush +25%  
6-8 hr Rush +50%

**Design Options:** The pricing above is for printing only. Layout & design are not included. Here are a number excellent options to help you get the design you need.

**In-house Design** - Let our professional design staff create a one-of-a-kind business card for you. Our in-house design service is \$88 per hour (billed in 10 minute increments). You supply a rough mockup, images/logo and text, we do the rest. We will provide a cost estimate before starting and an email approval when the design is complete.

**Personal Design Software** - Use your own favorite graphics software (Photoshop, Illustrator, InDesign, etc.). Templates are available for download on our website so you can prepare your files to the correct specifications for our printing press. Our knowledgeable staff is eager to help with any layout questions you may have. We provide a **free file check** to confirm accuracy before printing.

**Design Online:** Our free online business card design software is robust and easy to use, with loads of options to allow you to take creative control. We have an extensive collection of themes to choose from or you can design from scratch. Available for "standard" cards only. Pick up in-store or receive by mail. To get started go to [www.mcgreevyprolab.com](http://www.mcgreevyprolab.com) and enter our **OnlinePhotoCenter**.



McGreevy

**PROLAB**  
**& ProPress**

Professional Quality Photo Lab &amp; Press Printing Services

518-426-1039

## Books - Press Printed (page 1 of 2)

At McGreevy ProLab & ProPress we specialize in short-run custom books. Every phase of the book making process is completed on premises; printing, case making, laminating, milling, notching, gluing and binding; we do it all in-house. We use only the finest quality papers and cover materials and adhere to strict color management and quality control procedures.

### Four Book Types Available

<p><b>Saddle Stitch Books:</b> Saddle stitching is a cost effective soft cover binding process that utilizes wire staples along the book's spine to create a sturdy, professional product that will lie open flat. Saddle Stitched Books are perfect for catalogs, magazines, booklets, programs, manuals, pamphlets, menus, multi-page brochures and much more.</p> <ul style="list-style-type: none"> <li>• Our most economical book type</li> <li>• 8 pages up to 60 pages</li> <li>• Cover is included in the page count</li> <li>• Inside cover <u>is</u> printable</li> <li>• Expandable in 4 page increments</li> <li>• Heavy Cover - optional add-on</li> <li>• Cover Lamination - not available</li> </ul>	<p><b>Perfect Bind Books:</b> Our highest quality soft cover books are made using the perfect bind method. The spine edge of the pages are mechanically milled, notched and then hot glued to the cover, which is creased to wrapped around the book block. Once the glue sets, the book edges are trimmed flush. Most soft cover books you see use perfect binding, it is strong, clean and elegant.</p> <ul style="list-style-type: none"> <li>• Our finest soft cover book</li> <li>• 20 pages up to 140 pages</li> <li>• Cover is <u>not</u> included in the page count</li> <li>• Inside cover is <u>not</u> printable</li> <li>• Expandable in 2 page increments</li> <li>• Heavy Cover - Standard</li> <li>• Cover Lamination - optional add-on</li> </ul>
<p><b>Coil Bind Books:</b> Soft cover coil binding is most often chosen for its ability to fold completely over on itself or lay totally flat for ease of use. It's business-like quality makes it perfect for reports, presentations, manuals, inventory and product catalogs. It also makes a wonderful cookbook!</p> <ul style="list-style-type: none"> <li>• 20 pages up to 136 pages</li> <li>• Cover is included in the page count</li> <li>• Inside cover <u>is</u> printable</li> <li>• Expandable in 2 page increments</li> <li>• Heavy Cover - Standard</li> <li>• Cover Lamination - optional add-on</li> </ul>	<p><b>Hard Cover Books:</b> Beautifully crafted, each hard cover book is made to order and comes standard with a laminate protected image-wrapped cover. The interior pages are milled, notched, glued and then bound to the hard cover case. End sheets are used to finish off the inside of the cover to create a stylish bookstore quality book.</p> <ul style="list-style-type: none"> <li>• Our biggest selling book type</li> <li>• 20 pages up to 140 pages</li> <li>• Cover is <u>not</u> included in the page count</li> <li>• Inside cover is <u>not</u> printable</li> <li>• Expandable in 2 page increments</li> <li>• Cover Lamination - Standard</li> </ul>

**Design Options:** Book pricing is for printing & binding only. Layout & design are not included. Here are three excellent options to help you get the design you need:

**In-house Design** - Let our professional design staff create a one-of-a-kind book for you. Books can vary greatly in complexity, so an accurate quote is only possible after we see your project first-hand, but on average we can generally design books for about \$12 to \$15 per page. We work closely with each client to make certain that the final product is exactly to your specifications. We provide you with an on-screen approval of the finished design and then we print a completed book for your inspection before running any quantities. Layout and design is charged at \$88 per hour .

**Personal Design Software** - Use your own favorite graphics software (Photoshop, Illustrator, InDesign, etc.). Templates are available for download on our web site so you can prepare your files to the correct specifications for our printing press. Our knowledgeable staff is eager to help with any layout questions you may have. We provide a **free file check** to confirm accuracy before printing.

**Design Online** - Our **free** online book design software will make you look like a pro. It's fun and easy with loads of options that allow you to take creative control. To get started go to [www.mcgreevyprolab.com](http://www.mcgreevyprolab.com) and enter our **OnlinePhotoCenter**.



McGreevy

**PROLAB****& ProPress**

Professional Quality Photo Lab &amp; Press Printing Services

518-426-1039

**Books - Press Printed** (page 2 of 2)

- Full Color Printing
- Full Bleed Printing
- Variety of Paper Stocks
- Printed & Bound In-house
- Short Runs (can even order a single book)
- Cover Lamination
- Design Templates Available
- In-house Design Available
- Online Design Software

	Soft Cover			Hard Cover	Add-ons	
Book Sizes	Saddle Stitch 20 pages*	Coil Bind 20 pages	Perfect Bind 20 pages	Hard Cover 20 pages	Additional Pages	Soft Cover Lamination
5.5 x 5.5	10.95	-	14.00	-	0.45	2.50
5.5 x 7.25 (Vertical or Horizontal)	10.95	-	14.00	-	0.45	2.50
5.5 x 8.5 (Vertical)	10.95	12.95	-	-	0.45	2.50
8 x 8	15.25	17.00	20.00	43.95	0.68	4.00
8.5 x 11 (Vert.) (Economy b&w)**	7.15	-	-	-	0.25	-
8.5 x 11 (Vertical)	15.25	17.00	20.00	43.95	0.68	4.00
11 x 8.5 (Horizontal)	-	17.00	28.95	49.45	0.68	4.00
12 x 12	-	25.95	43.95	59.95	1.16	5.75

**One sheet of paper includes two pages (front & back). A twenty page book is printed on ten sheets of paper.**

\* Saddle Stitch books can be ordered with as few as 8 pages. To calculate the reduced cost, take the 20 page price listed above and subtract "additional page" fee for every page less than twenty.

\*\* Economy b&w - Inside pages are printed grayscale on 20 lb. bond paper. The cover is printed full color on 100 lb. text Silk paper. Full bleed printing not available. Our printed price list is a good example of this product.

Quantity Discounts (Duplicates of the same book ordered at the same time)				
5+ = 10%	10+ = 20%	25+ = 30%	50+ = 40%	100+ = 50%
Calculate base price plus any add-ons or upgrade options, then apply discount.				

**Paper Options:** For all book types

- 80 lb Text (Silk or Uncoated) - Included in price
- 80 lb Text (Linen) - add \$ .08 per page
- 80 lb Text (Watercolor) - add \$ .08 per page
- 100 lb Text (Silk or Uncoated) - add \$ .08 per page

**Heavy Cover Options:** Saddle Stitch books only

- 80 lb Cover (Silk or Uncoated) - add \$ .75 per book
- 80 lb Cover (Linen or Watercolor) - add \$ .95 per book

**Turn-around: 5 days**

4 days Rush +10%

3 days Rush +25%

2 days Rush +50%

More time may be  
needed for projects  
with over ten books.

Beautiful Hand Crafted Books

McGreevy

**PROLAB**  
 & ProPress

Professional Quality Photo Lab &amp; Press Printing Services

518-426-1039

## Calendars - Press Printed

Get a lot of bang for your buck by staying in the spotlight all year long. Beautiful custom full color press printed calendars are now available for everyone and for every occasion. Best of all, our calendars have a flexible start date which runs for twelve consecutive months starting with the month of your choice. So why not get started today? Here are just a few ideas: fundraisers, fine art, children's art, art photography, special events, remember the year, baby, weddings, holidays, reunions, Mother's day, Father's day, birthdays, anniversary, graduation, vacation, sports, travel, friendship, milestones.

### Features:

- 12 Month Wall Calendar
- 11x8.5 (opens to 11x17)
- Cover - 80 lb. cover stock
- Inside pages - 80 lb text stock
- Available in: Silk or Uncoated  
Linen - add \$1.95  
Watercolor - add \$1.95
- Full color printing
- Full bleed printing included
- Hole drill included
- Color managed workflow

---

**Turn-around: 5 days**

4 days Rush +10%  
3 days Rush +25%  
2 days Rush +50%

---

### Ordering Info:

- No minimum order
- File's must be ready to print
- Layout & design not included
- See "Design Options" below
- Add \$1.95 per calendar for linen or watercolor paper



	Saddle Stitch Binding	Deluxe Coil Binding
1	24.15	27.78
5+	21.74	25.00
10+	19.32	22.22
25+	16.91	19.45
50+	14.49	16.67
100+	12.08	13.89
150+	9.66	-
200+	8.45	-

### On-line Design Software:

Go to [www.mcgreevyprolab.com](http://www.mcgreevyprolab.com) & enter our **OnlinePhotoCenter**

- Do it yourself
- Fun & Easy
- Total creative control
- Variety of themes & backgrounds
- Multi-image layouts
- Custom borders
- Text tool
- Insert custom dates
- Insert pictures on specific days

**Design Options:** The pricing above is for printing only. Layout & design are not included. Here are a number of excellent options to help you get the design you need.

**In-house Design** - Let our professional design staff create a one-of-a-kind calendar for you. Our in-house design service is \$88 per hour (billed in 10 minute increments). You supply a rough mockup, images/logo and text, we do the rest. We will provide a cost estimate before starting and an on-screen approval when the design is complete.

**Design Online** - Our free online calendar design software will make you look like a pro. It's fun and easy with loads of options that allow you to take absolute creative control. We provide a **free file check** to insure accuracy before printing. To get started go to [www.mcgreevyprolab.com](http://www.mcgreevyprolab.com) and enter our **OnlinePhotoCenter**.

**Personal Design Software** - Use your own favorite graphics software (Photoshop, Illustrator, InDesign, etc.). Templates are available for download on our web site so you can prepare your files to the correct specifications for our printing press. Our knowledgeable staff is eager to help with any layout questions you may have. We provide a **free file check** to confirm accuracy before printing.

McGreevy

**PROLAB**

Professional Quality Photo Lab &amp; Press Printing Services

**& ProPress**

518-426-1039

**12x18 Posters - Press Printed**

**Wow!** These are an incredible deal. Our beautiful full color posters are perfect for so many uses. Stay within your budget, do it right and make a big impression. Printed on a heavy 80 lb. cover stock, thick and durable, our posters are great for announcing upcoming events, exhibitions, performances, competitions, lectures, fundraisers, sporting events, etc. Posters are also perfect for sales, promotions, and point of purchase displays. Artists, illustrators and photographers can make posters featuring their finest works. Great for children's art as well. Each press run is individually checked by our professional staff for quality and color accuracy.

**Features:**

- Thick 80 lb. cover stock
- Available in: Silk  
Uncoated  
Watercolor  
Linen
- Full color printing
- Full bleed printing included
- Horizontal or vertical layout
- Color managed workflow

**Ordering Info:**

- Minimum Order - 10 Posters
- File must be ready to print
- Layout & design not included
- See "Design Options" below
- Hard Copy Approval - \$7.95



	12x18 Posters
10	23.07
25	40.51
50	64.24
100	105.27
250	220.55
500	382.25
1000	713.90

**Turn-around: 2 days**

24hr. Rush +25%  
6-8 hr Rush +50%

- Full bleed posters trim down to 11½ x 17½
- No bleed posters remain a full 12x18 sheet.
- **Paper Upgrades:**  
Watercolor or Linen (80 lb. cover) - .24 ea.  
Silk or Uncoated (110 lb. cover) - .24 ea.  
Watercolor or Linen (110 lb cover) - .44 ea.

**Design Options:** The pricing above is for printing only. Layout & design are not included. Here are two excellent options to help you get the design you need.

**In-house Design** - Let our professional design staff create a one-of-a-kind poster for you. Our in-house design service is \$88 per hour (billed in 10 minute increments). You supply a rough mockup, images/logo and text, we do the rest. We will provide a cost estimate before starting and an email approval when the design is complete.

**Personal Design Software** - Use your own favorite graphics software (Photoshop, Illustrator, InDesign, etc.). Templates are available for download on our web site so you can prepare your files to the correct specifications for our printing press. Our knowledgeable staff is eager to help with any layout questions you may have. We provide a **free file check** to confirm accuracy before printing.

McGreevy

**PROLAB**  
**& ProPress**

Professional Quality Photo Lab &amp; Press Printing Services

518-426-1039

## Brochures - Press Printed

Brochures are a great way to advertise your products, services and upcoming events. Available in variety of fold configurations; the multi-panel structure allows you to organize all your information into a single professional presentation. Our short run, full color brochure printing allows you to print just the amount you need.

### Features:

- Premium text paper stock
- Available in:
  - 100 lb. Silk or Uncoated
  - 80 lb. Linen
  - 80 lb. Watercolor
- Full color printing
- Full bleed printing included
- Color managed workflow

### Ordering Info:

- Minimum Order - 25 Brochures
- File must be ready to print
- Layout & design not included
- See "Design Options" below
- Hard Copy Approval - \$7.95
- Scored for folding and delivered flat
- Folding Optional - Add .08 each

### Folding Options:

8½x11 8½x14 11x17	Half-fold Tri-fold Z-fold
8½x14 & 11x17	Accordian Double Gate Double Parallel Double Parallel Rev. Roll fold
11x17(only)	Right Angle fold

	8½x11	8½x14	11x17
25	42.02	54.33	60.37
50	61.77	82.91	92.13
100	94.82	135.63	150.70
250	186.18	264.83	294.25
500	308.00	479.16	532.40
Available in: Silk or Uncoated 100 lb. text stock. & Linen or Watercolor 80 lb. text stock.			

---

**Turn-around: 2 days**

24hr. Rush +25%  
6-8 hr Rush +50%

---

**Design Options:** The pricing above is for printing only. Layout & design are not included. Here are two excellent options to help you get the design you need.

**In-house Design** - Let our professional design staff create a one-of-a-kind brochure for you. Our in-house design service is \$88 per hour (billed in 10 minute increments). You supply a rough mockup, images/logo and text, we do the rest. We will provide a cost estimate before starting and an email approval when the design is complete.

**Personal Design Software** - Use your own favorite graphics software (Photoshop, Illustrator, InDesign, etc.). Templates are available for download on our web site so you can prepare your files to the correct specifications for our printing press. Our knowledgeable staff is eager to help with any layout questions you may have. We provide a **free file check** to confirm accuracy before printing.

McGreevy

**PROLAB**  
**& ProPress**

Professional Quality Photo Lab &amp; Press Printing Services

518-426-1039

## Flyers - Press Printed

Get your message out with flyers! Flyers are an indispensable marketing tool used to promote an upcoming event, service, product or sale. Flyers offer an economical way to share important information with the general public. Eye catching full color graphics expertly printed on premium 100 lb. text paper are sure to get people's attention. Flyers are also perfect for job and envelope stuffers.

### Features:

- Premium text paper stock
- Available in:
  - 100 lb. Silk or Uncoated
  - 80 lb. Linen
  - 80 lb. Watercolor
- Full color printing
- Full bleed printing included
- Horizontal or vertical layout
- Color managed workflow

### Ordering Info:

- Minimum Order - 25
- File must be ready to print
- Layout & design not included
- See "Design Options" below
- Hard Copy Approval - \$7.95



	Mini 3½ x 4		Standard 4 x 5½		Rack Size 3½ x 8½		Half Sheet 5½ x 8½	
	Single Sided	Double Sided	Single Sided	Double Sided	Single Sided	Double Sided	Single Sided	Double Sided
25	11.39	14.85	13.48	17.91	15.38	20.35	18.68	24.59
50	16.23	21.18	19.53	25.41	22.22	29.37	27.01	35.97
100	23.87	31.02	28.60	37.62	33.11	46.20	40.81	55.11
250	41.80	56.10	52.53	69.58	61.33	81.95	77.28	103.68
500	69.85	90.20	85.80	112.20	100.65	138.05	127.60	175.45
1000	94.60	117.70	106.70	145.20	132.00	181.50	181.50	256.30

---

**Turn-around: 2 days**

 24hr. Rush +25%  
 6-8 hr Rush +50%
 

---

**Design Options:** The pricing above is for printing only. Layout & design are not included. Here are two excellent options to help you get the design you need.

**In-house Design** - Let our professional design staff create a one-of-a-kind flyer for you. Our in-house design service is \$88 per hour (billed in 10 minute increments). You supply a rough mockup, images/logo and text, we do the rest. We will provide a cost estimate before starting and an email approval when the design is complete.

**Personal Design Software** - Use your own favorite graphics software (Photoshop, Illustrator, InDesign, etc.). Templates are available for download on our web site so you can prepare your files to the correct specifications for our printing press. Our knowledgeable staff is eager to help with any layout questions you may have. We provide a **free file check** to confirm accuracy before printing.

McGreevy

**PROLAB**  
**& ProPress**

Professional Quality Photo Lab &amp; Press Printing Services

518-426-1039

## Sell Sheets - Press Printed

Printed on premium text paper, sell sheets provide the impact of full color printing and the power to generate interest at a glance. Sell sheets are a marketing staple, typically used as sales folder inserts, product literature, and handouts. They are also great for business presentations, trade shows, and conferences. 8½ x 11 is the industry standard for sell sheets.

### Features:

- Premium text paper stock
- Available in:
  - 100 lb. Silk or Uncoated
  - 80 lb. Linen
  - 80 lb. Watercolor
- Full color printing
- Full bleed printing included
- Horizontal or vertical layout
- Color managed workflow

### Ordering Info:

- Minimum Order - 25
- File must be ready to print
- Layout & design not included
- See "Design Options" below
- Hard Copy Approval - \$7.95



	8 x 10		8½ x 11		11 x 14		11 x 17	
	Single Sided	Double Sided	Single Sided	Double Sided	Single Sided	Double Sided	Single Sided	Double Sided
25	26.18	35.15	26.18	35.15	38.31	52.67	38.31	52.67
50	39.11	53.52	39.11	53.52	59.84	82.23	59.84	82.23
100	61.49	83.82	61.49	83.82	96.47	136.40	96.47	136.40
250	119.63	166.93	119.63	166.93	198.55	266.75	198.55	266.75
500	206.80	275.00	206.80	275.00	338.25	482.90	338.25	482.90
1000	328.90	479.60	328.90	479.60	625.90	927.30	625.90	927.30

---

**Turn-around: 2 days**
**24hr. Rush +25%**  
**6-8 hr Rush +50%**


---

**Design Options:** The pricing above is for printing only. Layout & design are not included. Here are two excellent options to help you get the design you need.

**In-house Design** - Let our professional design staff create a one-of-a-kind sell sheet for you. Our in-house design service is \$88 per hour (billed in 10 minute increments). You supply a rough mockup, images/logo and text, we do the rest. We will provide a cost estimate before starting and an email approval when the design is complete.

**Personal Design Software** - Use your own favorite graphics software (Photoshop, Illustrator, InDesign, etc.). Templates are available for download on our web site so you can prepare your files to the correct specifications for our printing press. Our knowledgeable staff is eager to help with any layout questions you may have. We provide a **free file check** to confirm accuracy before printing.

McGreevy

**PROLAB**  
**& ProPress**

Professional Quality Photo Lab &amp; Press Printing Services

518-426-1039

## Rack Cards - Press Printed

Get your full color advertisement directly into the hands of perspective customers. When a person picks up a rack card you know they are interested in your product or service, which guarantees that your message is well targeted. The industry standard rack card size is 4 x 9. The 3½ x 8½ rack card provides a more economical option and still fits nicely into rack card holders. The 4 x 11 oversize also fits a standard rack card holder and is priced the same as the 4 x 9.

### Features:

- Thick 110 lb. cover stock
- Available in: Silk  
Uncoated  
Linen  
Watercolor
- Full color printing
- Full bleed printing included
- Horizontal or vertical layout
- Color managed workflow

### Ordering Info:

- Minimum Order - 25
- File must be ready to print
- Layout & design not included
- See "Design Options" below
- Hard Copy Approval - \$7.95



	Economy 3½ x 8½		Standard 4 x 9		Oversize 4 x 11	
	Single Sided	Double Sided	Single Sided	Double Sided	Single Sided	Double Sided
25	16.48	21.45	20.05	25.96	20.05	25.96
50	24.42	31.57	29.76	38.72	29.76	38.72
100	37.51	50.60	46.31	60.61	46.31	60.61
250	72.33	92.95	91.03	117.43	91.03	117.43
500	122.27	160.05	155.10	202.95	155.10	202.95
1000	176.00	225.50	236.50	311.30	236.50	311.30
<b>Prices above based on Silk or Uncoated 110 lb. cover stock.</b> <b>Paper Upgrades:</b> Linen or Watercolor (110 lb. cover) - .10 ea.						

---

**Turn-around: 2 days**

 24hr. Rush +25%  
 6-8 hr Rush +50%
 

---

**Design Options:** The pricing above is for printing only. Layout & design are not included. Here are two excellent options to help you get the design you need.

**In-house Design** - Let our professional design staff create a one-of-a-kind rack card for you. Our in-house design service is \$88 per hour (billed in 10 minute increments). You supply a rough mockup, images/logo and text, we do the rest. We will provide a cost estimate before starting and an email approval when the design is complete.

**Personal Design Software** - Use your own favorite graphics software (Photoshop, Illustrator, InDesign, etc.). Templates are available for download on our web site so you can prepare your files to the correct specifications for our printing press. Our knowledgeable staff is eager to help with any layout questions you may have. We provide a **free file check** to confirm accuracy before printing.



McGreevy

**PROLAB**  
**& ProPress**

Professional Quality Photo Lab &amp; Press Printing Services

518-426-1039

## Table Tents - Press Printed

Table tents are a very versatile advertising tool, capable of reaching many people over an extended period of time. Strategically placed on tables and countertops, table tents are effective at introducing your customers to new products, services, special offers and upcoming events. Table tents are commonly found in restaurants, bars, hotels, retail and sales environments, trade shows, conventions, and just about anywhere that people gather.

### Features:

- Thick 110 lb. cover stock
- Available in: Silk
  - Uncoated
  - Linen
  - Watercolor
- Full color printing
- Full bleed printing included
- Color managed workflow

### Ordering Info:

- Minimum Order - 25
- File must be ready to print
- Layout & design not included
- See "Design Options" below
- Hard Copy Approval - \$7.95
- Scored for folding and delivered flat.
- A-Frame style includes slits for easy-interlocking base.
- Standing Triangle style has a release liner tape strip adhered to the flap for easy set-up.

	<b>4x4</b> A-Frame 2 Panel	<b>4x8.5</b> A-Frame 2 Panel –Horizontal	<b>5.5x7</b> A-Frame 2 Panel –Vertical	<b>5x5.5</b> Standing Triangle 3 Panel
25	40.37	49.78	49.78	56.65
50	59.13	74.86	74.86	85.86
100	88.11	116.49	116.49	127.49
250	160.05	221.38	221.38	248.88
500	259.60	377.30	377.30	404.80
1000	380.60	607.20	607.20	662.20
<b>Prices above based on Silk or Uncoated 110 lb. cover stock.</b> <b>Paper Upgrades:</b> Linen or Watercolor (110 lb. cover) - .10 ea.				

---

**Turn-around: 2 days**
**24hr. Rush +25%**  
**6-8 hr Rush +50%**


---

**Design Options:** The pricing above is for printing only. Layout & design are not included. Here are two excellent options to help you get the design you need.

**In-house Design** - Let our professional design staff create a one-of-a-kind table tent for you. Our in-house design service is \$88 per hour (billed in 10 minute increments). You supply a rough mockup, images/logo and text, we do the rest. We will provide a cost estimate before starting and an email approval when the design is complete.

**Personal Design Software** - Use your own favorite graphics software (Photoshop, Illustrator, InDesign, etc.). Templates are available for download on our web site so you can prepare your files to the correct specifications for our printing press. Our knowledgeable staff is eager to help with any layout questions you may have. We provide a **free file check** to confirm accuracy before printing.

McGreevy

**PROLAB**  
**& ProPress**

Professional Quality Photo Lab &amp; Press Printing Services

518-426-1039

## Hang Tags - Press Printed

Hang tags are ideal to promote your company and give flare to your products. A well designed hang tag can provide valuable information, instruction and/or pricing while enhancing the image of your brand. Attach hang tags to virtually any item (clothing, toys, packaged food, arts & crafts, jewelry, etc.). Create hang tags for special events like weddings, fundraisers, milestones and holidays. Our hang tags are printed on thick cover stock which provides a sturdy feel, reinforcing the quality of your product. A hole is drilled in each hang tag with your choice of placement (top center, top left or top right).

**Features:**

- 3/16" hole for hanging
- Thick 110 lb. cover stock
- Available in: Silk  
Uncoated  
Linen  
Watercolor
- Full color printing
- Full bleed printing included
- Horizontal or vertical layout
- Color managed workflow

**Ordering Info:**

- Hole placement options:
  - top center (horizontal or vertical)
  - top left corner
  - top right corner
- Minimum Order - 50
- File must be ready to print
- Layout & design not included
- See "Design Options" below
- Hard Copy Approval - \$7.95



	2 x 3½ or 2½ x 3½			2½ x 5½ or 3½ x 3½			Folded 2½ x 2½ or 2 x 3 ½	
	Single Sided	Double Sided		Single Sided	Double Sided		Single Sided	Double Sided
50	22.39	26.13		23.93	28.93		32.78	37.73
100	30.25	35.75		33.66	40.81		45.54	52.69
250	51.43	61.05		57.48	71.78		78.93	93.23
500	81.40	97.35		95.70	116.05		132.55	152.90
1000	112.20	130.90		136.40	159.50		200.20	223.30
<b>Prices above based on Silk or Uncoated 110 lb. cover stock.</b> <b>Paper Upgrades:</b> Linen or Watercolor (110 lb. cover) - .03 ea.								

**Turn-around: 2 days**

24hr. Rush +25%  
6-8 hr Rush +50%

**Design Options:** The pricing above is for printing only. Layout & design are not included. Here are two excellent options to help you get the design you need.

**In-house Design** - Let our professional design staff create a one-of-a-kind hang tag for you. Our in-house design service is \$88 per hour (billed in 10 minute increments). You supply a rough mockup, images/logo and text, we do the rest. We will provide a cost estimate before starting and an email approval when the design is complete.

**Personal Design Software** - Use your own favorite graphics software (Photoshop, Illustrator, InDesign, etc.). Templates are available for download on our web site so you can prepare your files to the correct specifications for our printing press. Our knowledgeable staff is eager to help with any layout questions you may have. We provide a **free file check** to confirm accuracy before printing.

McGreevy

**PROLAB**  
& ProPress

Professional Quality Photo Lab &amp; Press Printing Services

518-426-1039

## Bookmarks - Press Printed

Advertise your company, website or products every time someone picks up their favorite book. Bookmarks are a valuable and cost effective advertising tool; they make great give-a-ways and people definitely use them. Bookmarks are a fun and creative way to connect with customers. Of course, if you are printing a run of books at McGreevy ProLab & ProPress then a bookmark is the perfect companion.

**Features:**

- Thick 110 lb. cover stock
- Available in: Silk  
Uncoated  
Linen  
Watercolor
- Full color printing
- Full bleed printing included
- Horizontal or vertical layout
- Color managed workflow

**Ordering Info:**

- Minimum Order - 50
- File must be ready to print
- Layout & design not included
- See "Design Options" below
- Hard Copy Approval - \$7.95



	Small 2½ x 5½		Large 2½ x 8½	
	Single Sided	Double Sided	Single Sided	Double Sided
50	16.89	20.41	21.18	27.06
100	23.76	30.14	31.90	40.92
250	44.00	55.55	60.78	77.83
500	72.05	90.75	102.30	128.70
1000	112.20	139.70	139.70	178.20
<b>Prices above based on Silk or Uncoated 110 lb. cover stock.</b> <b>Paper Upgrades:</b> Linen or Watercolor (110 lb. cover) - .05 ea.				

**Turn-around:** 2 days
 24hr. Rush +25%  
 6-8 hr Rush +50%

**Design Options:** The pricing above is for printing only. Layout & design are not included. Here are two excellent options to help you get the design you need.

**In-house Design** - Let our professional design staff create a one-of-a-kind bookmark for you. Our in-house design service is \$88 per hour (billed in 10 minute increments). You supply a rough mockup, images/logo and text, we do the rest. We will provide a cost estimate before starting and an email approval when the design is complete.

**Personal Design Software** - Use your own favorite graphics software (Photoshop, Illustrator, InDesign, etc.). Templates are available for download on our web site so you can prepare your files to the correct specifications for our printing press. Our knowledgeable staff is eager to help with any layout questions you may have. We provide a **free file check** to confirm accuracy before printing.

McGreevy

**PROLAB**  
**& ProPress****Professional Quality Photo Lab & Press Printing Services****518-426-1039**

## **eCommerce & Website Hosting**

### **A Total Online Solution for the Professional Photographer**

Sell your photos online and much, much more. McGreevy ProLab together with PhotoShelter brings you the power of a fully integrated web site, eCommerce engine and print fulfillment service all in one complete package.

We have looked far and wide for the perfect online solution for our professional customers and PhotoShelter exceeds our expectations. PhotoShelter is a top notch website hosting company geared specifically toward the workflow of today's professional photographer. Their template based websites are extremely easy to launch, totally customizable and a snap to keep updated. Their tool sets include the latest online technologies with advanced features that you simply couldn't replicate on your own.

McGreevy ProLab & ProPress is a member of PhotoShelter's "Exclusive Global Print Vendor Network". When you sign up with PhotoShelter you can choose McGreevy ProLab & ProPress as your print provider and all your online print orders will be handled exclusively by us. We will print, pack and ship the orders directly to your clients.

What makes the PhotoShelter solution so unique is that it is far more than just an online events site. It is, in fact, a fully functioning website that can essentially replace your old website, providing you with a fresh new look and a set of powerful online business tools. You can even use your existing domain name. It can also be used as a direct link from your existing website if you prefer.

PhotoShelter along with McGreevy ProLab & ProPress is the perfect online solution for photographers. You get a professional looking website fully integrated with all the latest features while having the lab you know and trust fulfill all your online print orders.

#### **Features:**

- Customizable Website with Your Branding
- Add Custom Web Pages
- Built-in eCommerce
- Integrated Shopping Cart and Checkout
- Print Fulfillment with McGreevy ProLab & ProPress
- Sell and License digital images
- Secure Cloud Storage
- Client Proofing Tools
- Digital Downloads
- Built-in Search Engine Optimization
- Social Networking Tools
- Upload Jpg, Tif, Raw or PSD.
- Adobe Lightroom plug-in
- To see all 100+ features visit [www.mcgreevyprolab.com](http://www.mcgreevyprolab.com)



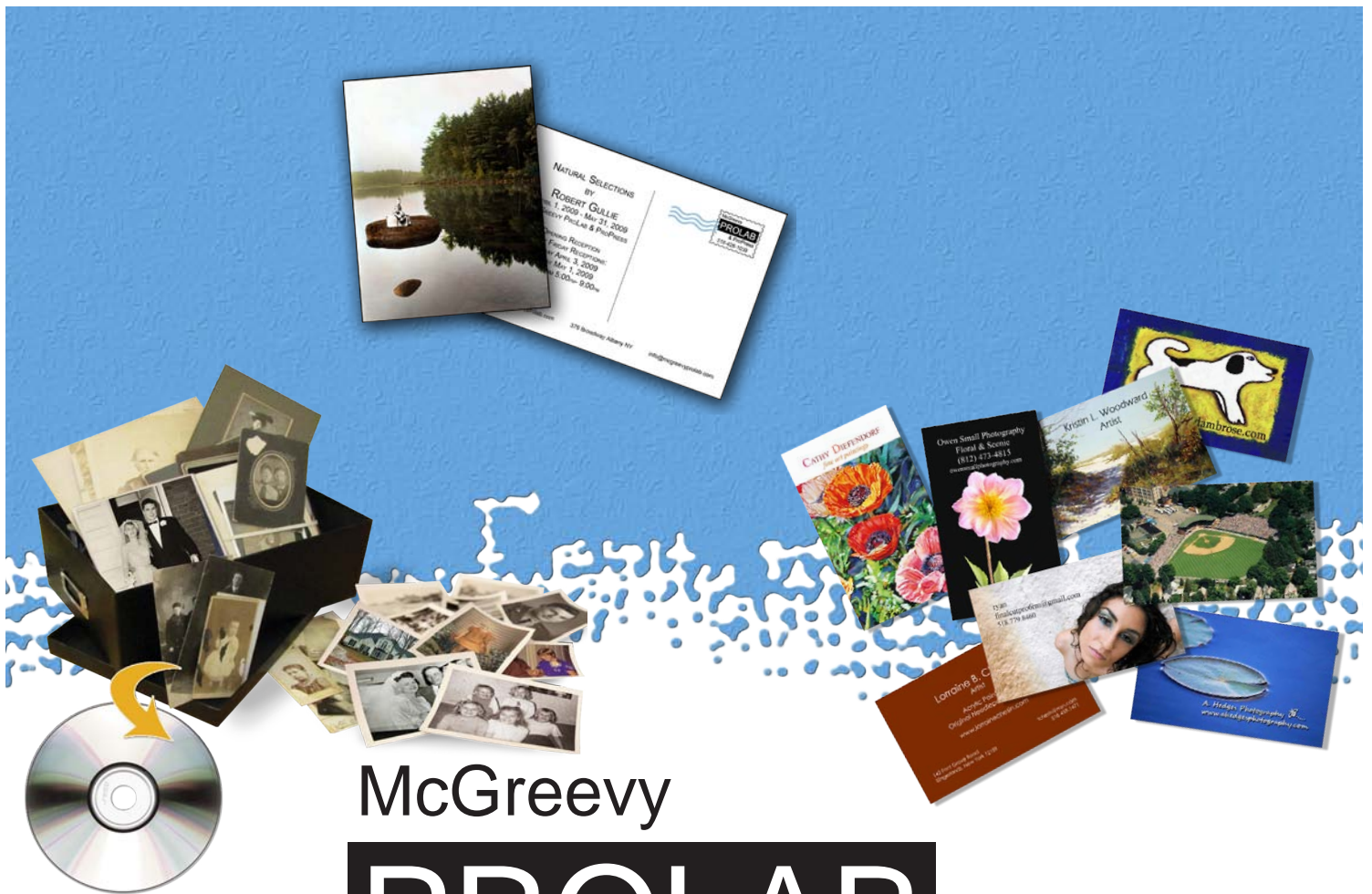
&amp;

McGreevy  
**PROLAB**  
**& ProPress**

Visit our web site for more info and pricing.

**Sign up using the PhotoShelter link on our website and receive your first month FREE!**





McGreevy

# PROLAB

## & ProPress



376 Broadway, Albany, NY 12207  
(518) 426-1039

[www.mcgreevyprolab.com](http://www.mcgreevyprolab.com)  
[info@mcgreevyprolab.com](mailto:info@mcgreevyprolab.com)



*This price list was produced in-house with our digital printing press*